

# Docking Drawer®

Blade Series Deep Cabinet  
Tear Sheet  
**BLADE 1514-130-X30**



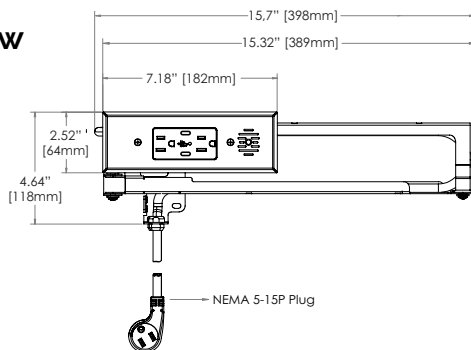
Docking Drawer is the market leader of in-drawer electrical outlets. Blade Series Deep Cabinet solutions have longer arms for simple installation into deeper and wider cabinets, such as kitchen islands. Our innovative solutions are designed to eliminate surface clutter and create functional and purposeful spaces by charging and powering everyday devices safely while they remain plugged in, out of sight and always at the ready. ETL Listed for use in the US & Canada, all outlets include interlocking safety features and are available in a variety of finishes, configurations and price points to satisfy any need and complement every style.

# Blade Series Deep Cabinet Blade 1514-130-X30

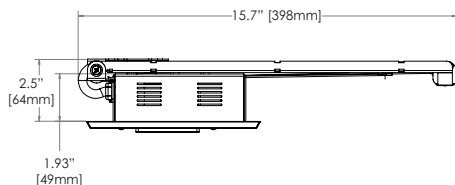
## Outlet Dimensions

Outlet Width	15.7" (398mm)
Outlet Height	4.64" (118mm)
Outlet Depth	2.5" (64mm)
Receptacle Box Depth	1.93" (49mm)
Cover Plate Height	2.52" (64mm)
Cover Plate Width	7.18" (182mm)

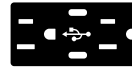
## Front View



## Top View



## Outlet Specifications



2 AC &  
2 USB-C

AC: 15 amps @ 120 VAC  
USB-C (single port connected to PD device):  
3 amps @ 9 VDC (30W)  
USB-C (single port connected to non-PD device): 3 amps @ 5 VDC (15W)  
USB-C (both ports connected): 3 amps @ 5 VDC (30W total power)

## Recommended Locations for the In-Cabinet Electrical Supply

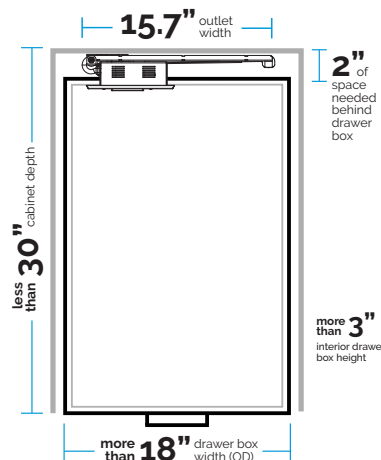


*Do NOT put the electrical supply directly behind the drawer box as it may interfere with the cable management arms*



## Cabinet Specifications

Outlet Width	15.7"
Minimum Drawer Box Width (OD)	18" or more
Minimum Interior Drawer Box Height	3" or more
Minimum Space Behind Drawer Box	2" or more
Maximum Base Cabinet Depth	30" or less



## Resources & Downloads

Docking Drawer provides all of the necessary resources to plan a Blade Series outlet installation. Download the following resources at [dockingdrawer.com/downloads](https://dockingdrawer.com/downloads):

- Spec Book
- DXF, Step and Solidwork Files
- Mounting Diagrams
- Installation Instructions

## Ready to Order?

Source directly from Docking Drawer or from one of our distribution partners. [Learn more.](#)

Project  
Name:

Where to  
Source:

- ☐ Docking Drawer  
☐ Distributor

Lead Time - 2 weeks

Freight - FOB San Ramon

Warranty - 2 Years

[Terms & Conditions](#)