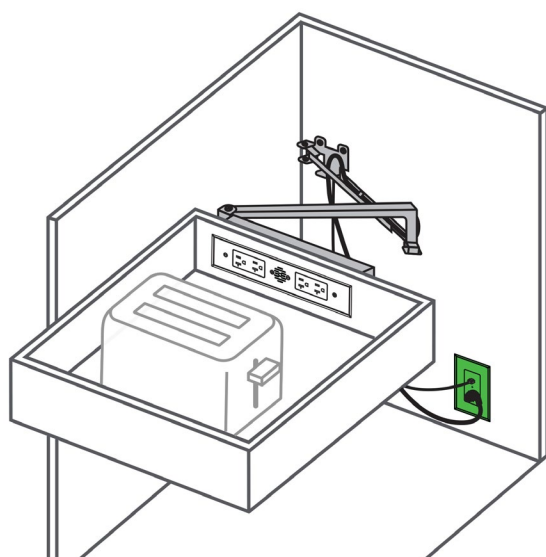


Docking Drawer®

20 amp Appliance In-Drawer
Outlet Kit with Blade Limit Switch

0290-20/266W-1000

DE-ENERGIZES
OUTLET
when the
DRAWER
CLOSES



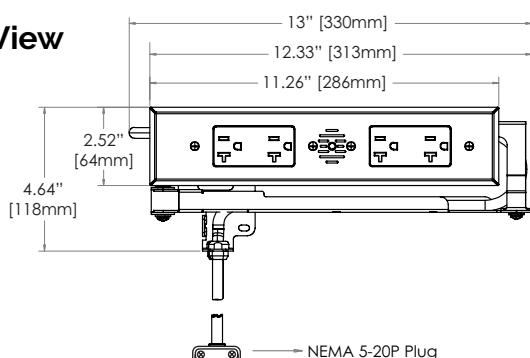
The Appliance In-Drawer Outlet Kit with Blade Limit Switch includes everything you need to power small appliances inside the drawer with the utmost safety, featuring a switch that will de-energize the in-drawer outlet and all connected appliances whenever the drawer is closed. This kit features multiple products: (1) a Docking Drawer Blade in-drawer outlet, (2) and a Safety Interlock Outlet with Blade Limit Switch. While our Blade Series in-drawer outlets come standard with an interlocking thermostat that cuts power to the outlet when surrounding temperatures exceed 120° F, the inclusion of the Safety Outlet with Blade Limit Switch offers an additional layer of safety and added peace of mind for powering heat-generating appliances inside the drawer. Not only can you rest easy knowing that your appliances are powered off whenever the drawer is closed, but the combination of these ETL-Listed products satisfies CEC requirements for AC outlets within the cabinet for our friends in Canada.

Blade Series Blade Duo

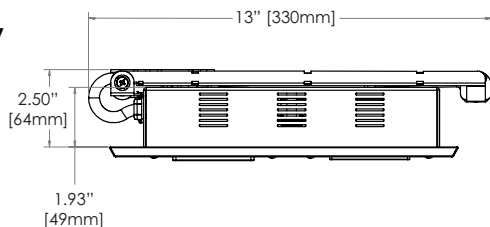
Outlet Dimensions

Outlet Width	13" (330mm)
Outlet Height	4.64" (118mm)
Outlet Depth	2.5" (64mm)
Receptacle Box Depth	1.93" (49mm)
Cover Plate Height	2.52" (64mm)
Cover Plate Width	11.26" (286mm)

Front View



Top View



Component Part Number

2012-266

Outlet Specifications



20 amps @ 120 VAC

2 AC

Recommended Locations for the In-Cabinet Electrical Supply

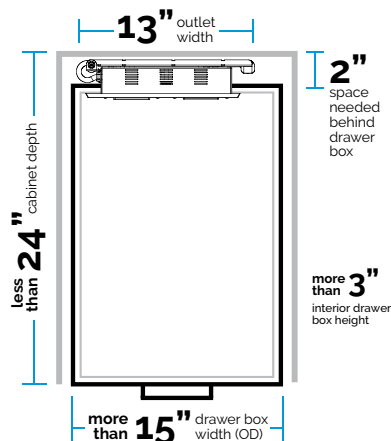


Do NOT put the electrical supply directly behind the drawer box as it may interfere with the cable management arms



Cabinet Specifications

Outlet Width	13"
Minimum Drawer Box Width (OD)	15" or more
Minimum Interior Drawer Box Height	3" or more
Minimum Space Behind Drawer Box	2" or more
Maximum Base Cabinet Depth	24" or less



Resources & Downloads

Docking Drawer provides all of the necessary resources to plan a Blade Series outlet installation. Download the following resources at dockingdrawer.com/downloads:

- Spec Book
- DXF, Step and Solidwork Files
- Mounting Diagrams
- Installation Instructions

Ready to Order?

Source directly from Docking Drawer or from one of our distribution partners. [Learn more.](#)

Project Name:

Where to Source:

- ☐ Docking Drawer
☐ Distributor

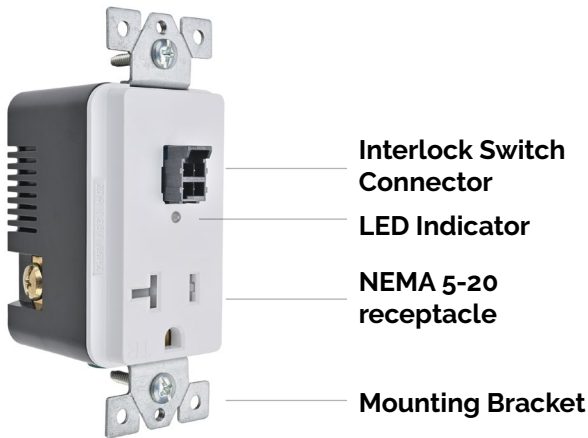
Lead Time - 2 weeks


Freight - FOB San Ramon

Warranty - 2 Years

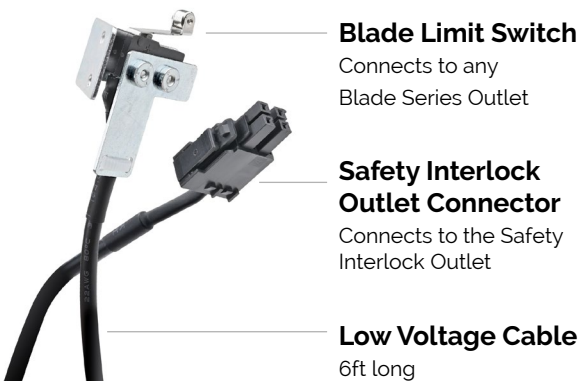
[Terms & Conditions](#)


Outlet Specs



Component Part Number	6020-1000
Input	100 - 125 VAC, 50/60 Hz
AC Output	20A@125VAC, 2500 VA MAX, 1/2 HP
DC Output	24VDC @ 100mA MAX
DC Power Supply	IEC Class II
Number of Receptacles	(1) NEMA 5-20R
Tamper Resistant	Yes
LED Indicator	Yes
Conformance 	UL60730, UL498, EN61558, EN60730, EN62386, CSA C22.2#42
Environmental	-10 °C to +50 °C, non condensing
Warranty	2 Years

Limit Switch Specs



Component Part Number	6020-1000
Type of Limit Switch	Blade Series Limit Switch
Limit Switch Cable	6 ft low voltage cable
Mounting Details	Fastens to the rear mounting bracket of any Blade Series outlet
Conformance 	UL60730, UL498, EN61558, EN60730, EN62386, CSA C22.2#42
Warranty	2 Years

Resources & Downloads

Docking Drawer provides all of the necessary resources to plan a Safety Interlock Outlet installation. Download the Spec Book and Installation Manuals at dockingdrawer.com/downloads

Ready to Order?

Source directly from Docking Drawer or from one of our distribution partners. [Learn more.](#)

Project Name:

Where to Source: ☐ Docking Drawer ☐ Distributor

Lead Time - 2 weeks Freight - FOB San Ramon Warranty - 2 Years [Terms & Conditions](#)