

# Docking Drawer™

## AUS Pop Up Powering Outlet Installation Instructions



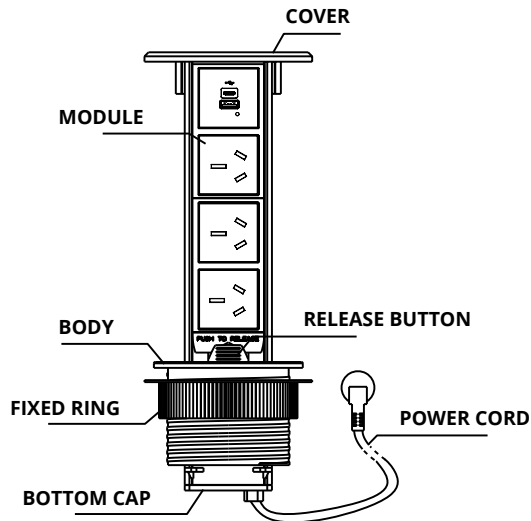
4030-1300xxxx



4030-1333xxxx  
4030-1133xxxx



4030-1330BBBQM



Visit our Downloads page at [dockingdrawer.com/downloads](https://dockingdrawer.com/downloads) to find additional mounting diagrams and cut out templates.



### CAUTION – READ CAREFULLY

- For indoor use only.
- Avoid liquid spills into the outlet.
- When using the wireless charger, do not place metal objects, magnets, magnetic stripe cards, etc.
- Be sure to ground connection.
- Do not disassemble the unit.
- If the product has malfunctioned, electrical maintenance is required by a professional.

## How to Install the Outlet

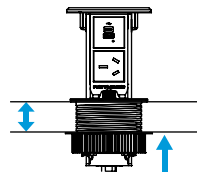
**Step 1 -** Select a location for the pop-up outlet that meets the following requirements:

- The edge of the cut out should be at least 40mm from the nearest wall.
- A power outlet should be within 1.5 meters of the installation cut out for the power cord to reach.

4030-1300

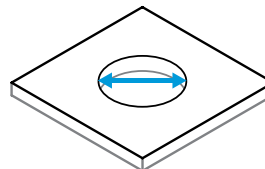
10-45mm

countertop  
thickness



300mm

of space needed  
under countertop

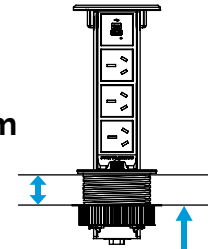


Cut out size  
**95-100mm**

4030-1333  
4030-1133

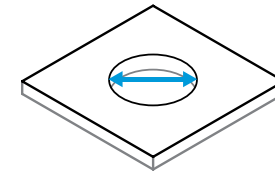
10-45mm

countertop  
thickness



400mm

of space needed  
under countertop

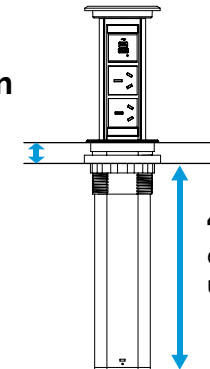


Cut out size  
**95-100mm**

4030-1330

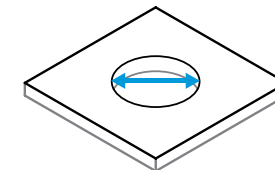
10-50mm

countertop  
thickness



440mm

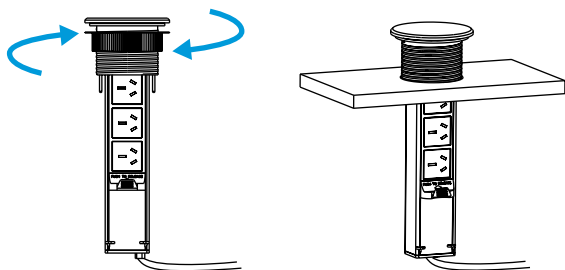
of space needed  
under countertop



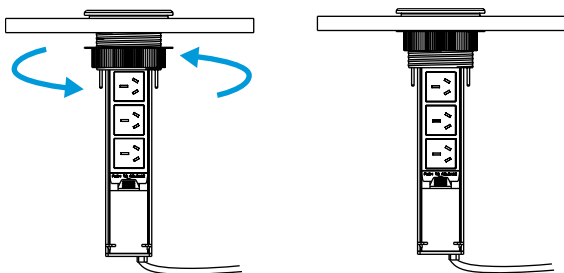
Cut out size  
**101-103mm**

**Step 2 -** Cut a hole in the surface of the countertop using the above requirements of your corresponding model.

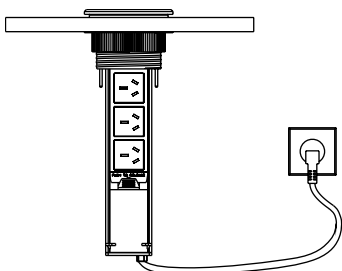
**Step 3 -** Rotate the fixed ring in a counterclockwise direction to remove, and then place the bottom of the outlet body into the cut out hole of the countertop. Be careful to avoid damage to power cord.



**Step 4 -** Adjust the front of the product to face in the desired direction. Under the counter, reattach the fixed ring and rotate in a clockwise direction to tighten. Note that when the fixed ring is askew, it will get stuck. If this occurs, re-tighten after alignment.



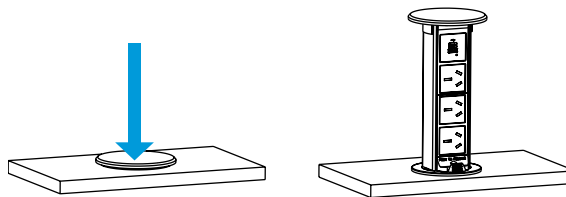
**Step 5 -** Connect power cord to the nearest power outlet, product can be used normally.



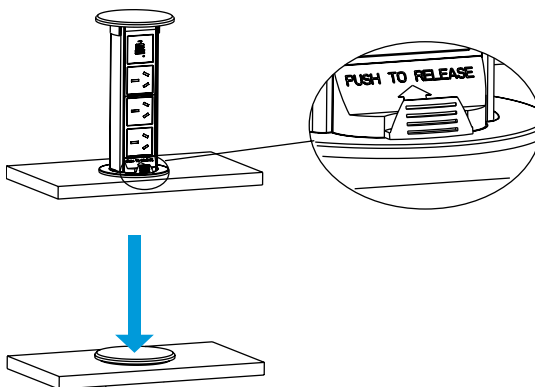
## How to Use the Outlet

*Manual outlets - 4030-1300xxxx, 4030-1133xxxx, and 4030-1333xxxx*

**To Open -** Use palm to press the center of the cover. Release your palm and the product will pop up. Lift the outlet body until the product locks into place.



**To Close -** Press the "Push to Release" button. Push the body back into the table, then press the center of the cover with your palm to lock.

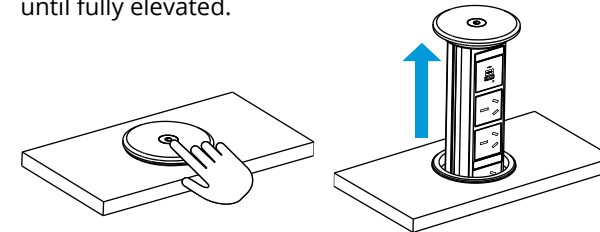


**Wireless Charging - (if applicable)** Place the device gently in the center of the top cover. Compatible with all Qi enabled devices. Ensure that there are no metallic foreign objects on the charging pad. Remove the device case, if any, as it may block the wireless signal.

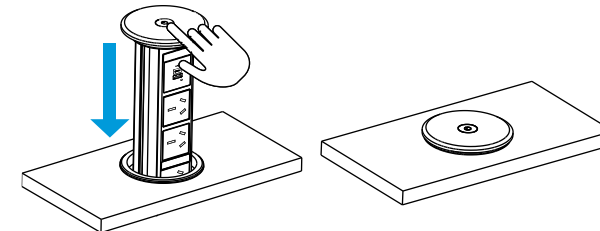
## How to Use the Outlet

*Motorized outlet - 4030-1330BBBQM*

**To Open -** Press and hold the center of the top cover for 3 seconds to enable the motorized raise/lower function. After the initial start process is complete, press the button again and the unit will raise until fully elevated.



**To Close -** After the outlet has fully risen, press the button on the top cover to activate the lowering operation.



*The unit can be paused while moving.*

*If the unit encounters an obstruction, the anti-force function will activate, and the unit will pause and reverse direction of its travel path.*

*Once the obstruction has been cleared, the unit can return to normal operation by pressing the button on the top of the unit again.*

## Docking Drawer™

091922DD

+1 (530) 205-3625 sales@dockingdrawer.com  
www.dockingdrawer.com