

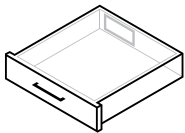
Docking Drawer®

Trio Series Mounting Diagrams



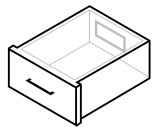
Choose Your Drawer Box Type

3



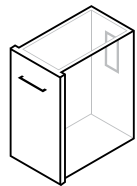
Shallow Drawer

7



Tall Drawer

11

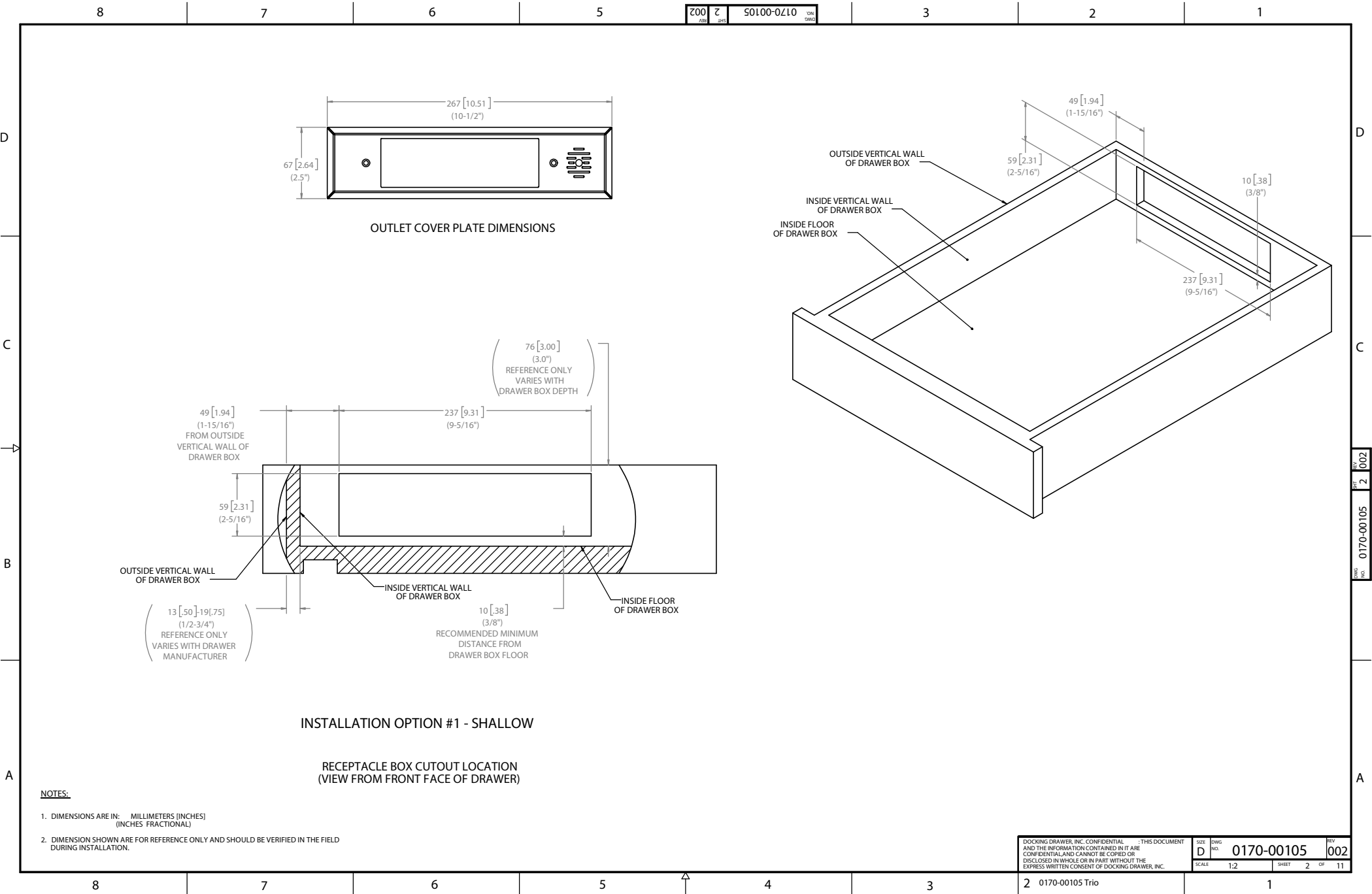


Vertical Drawer

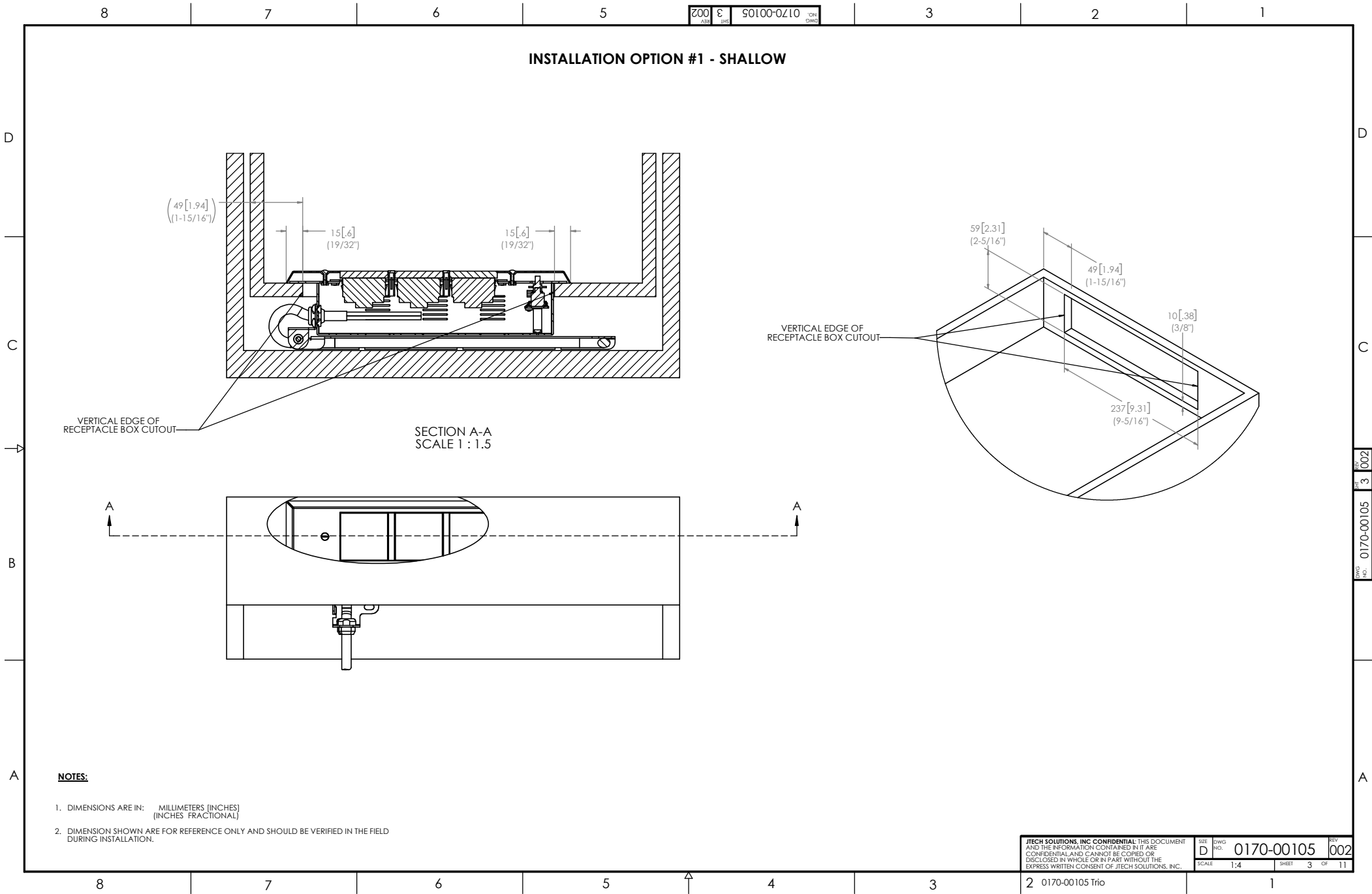
[Back to Contents](#) →



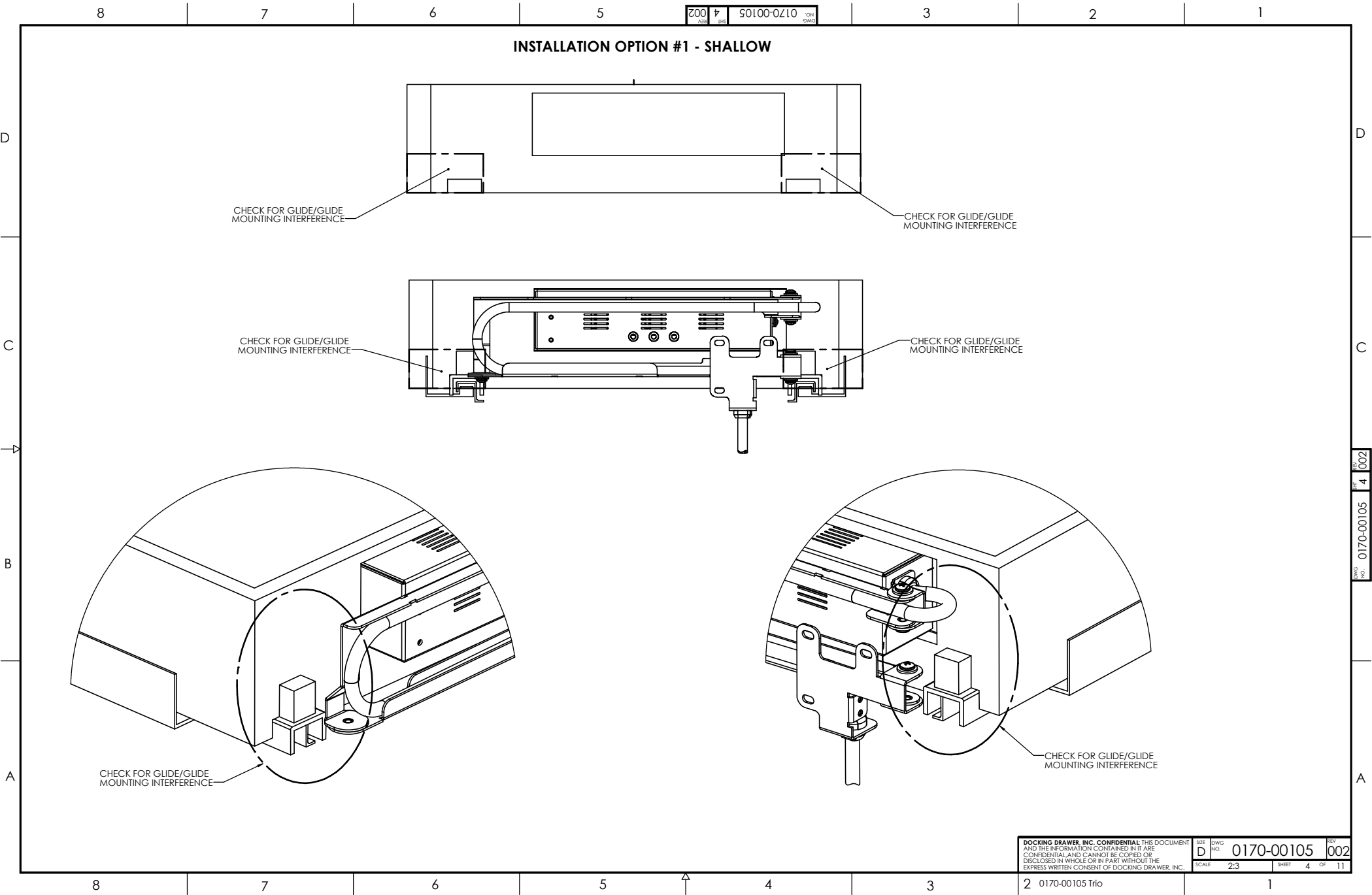
Docking Drawer Trio for Shallow Drawers



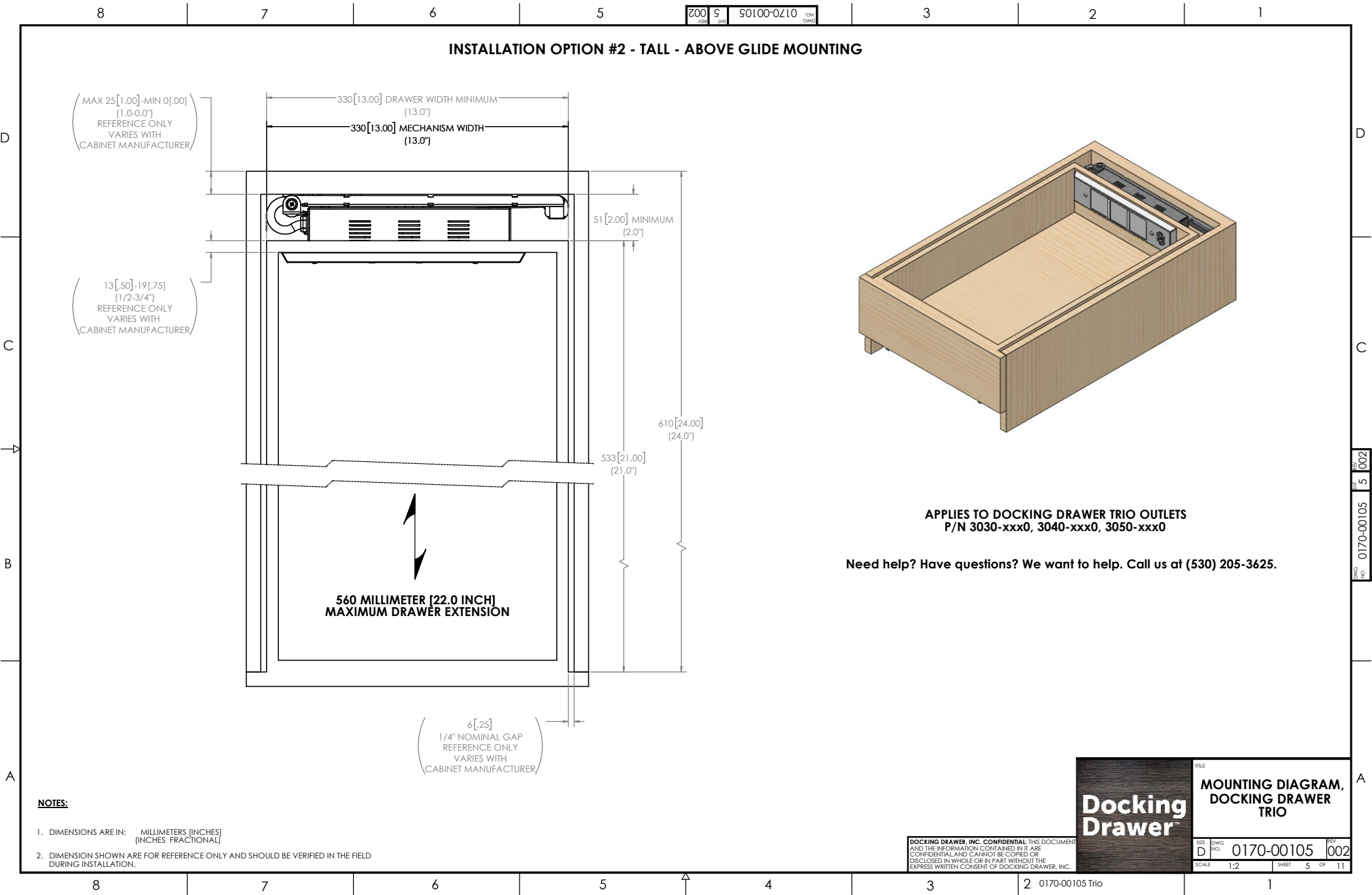
Docking Drawer Trio for Shallow Drawers



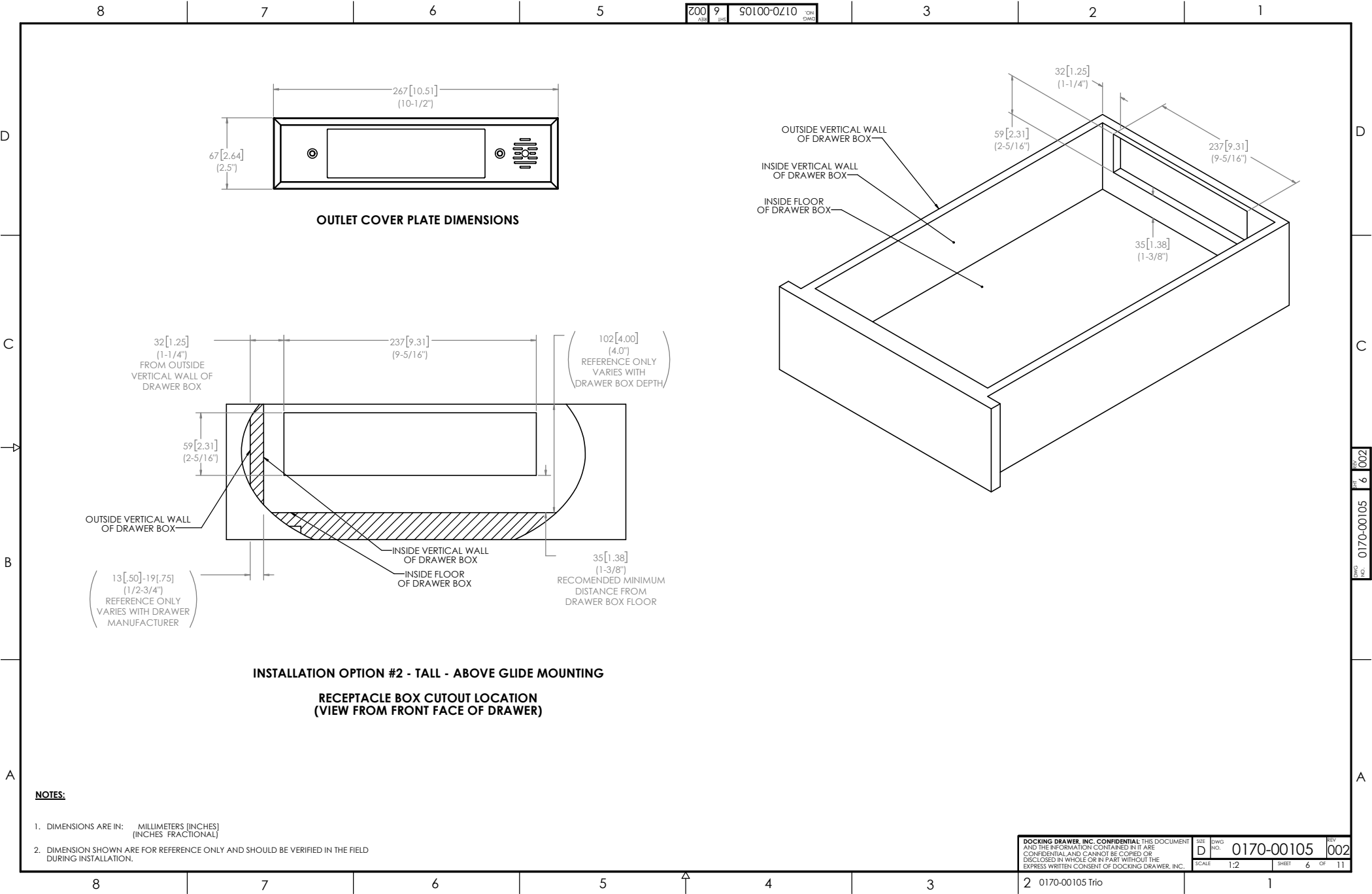
Docking Drawer Trio for Shallow Drawers

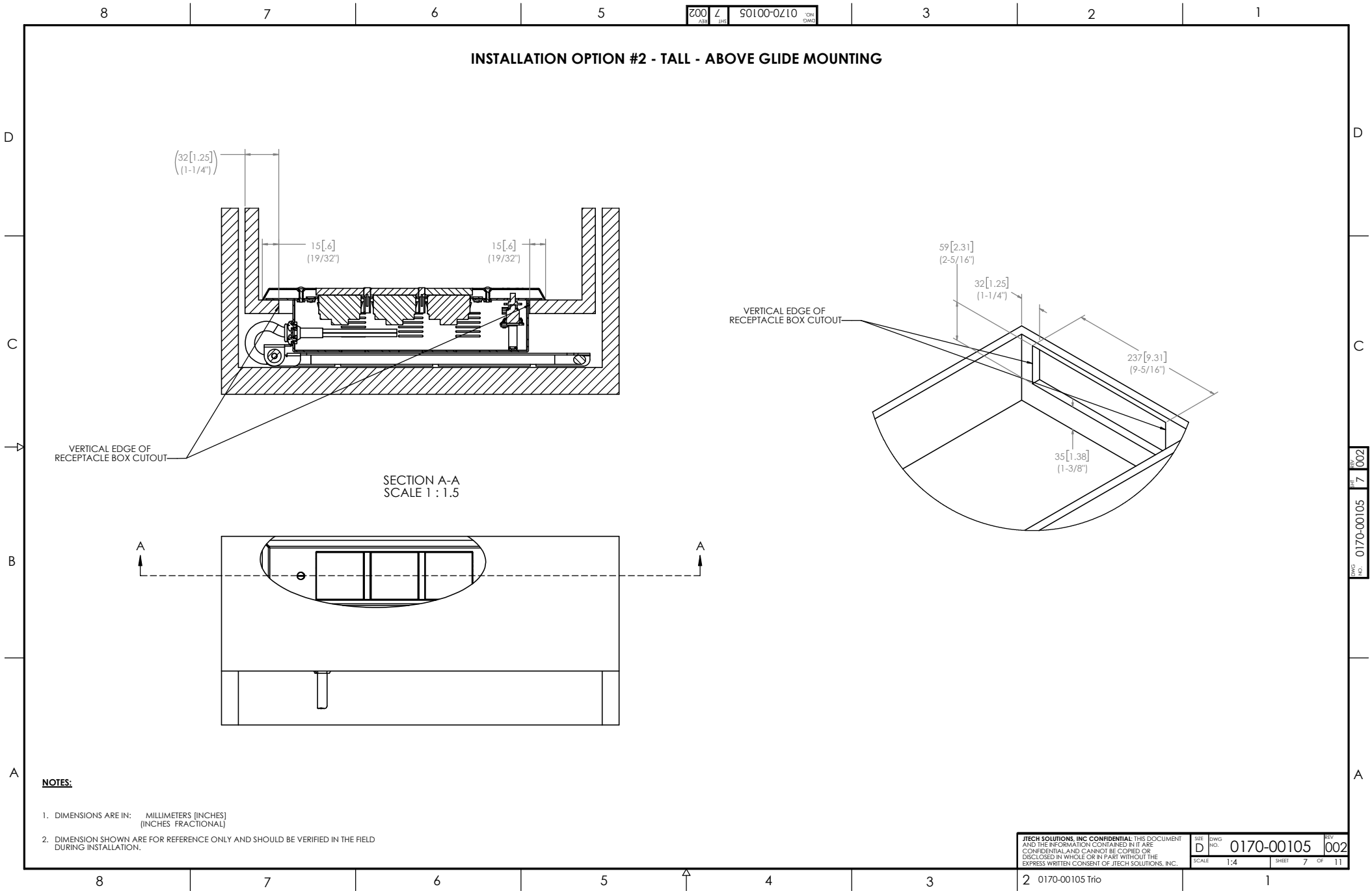


Docking Drawer Trio for Tall Drawers



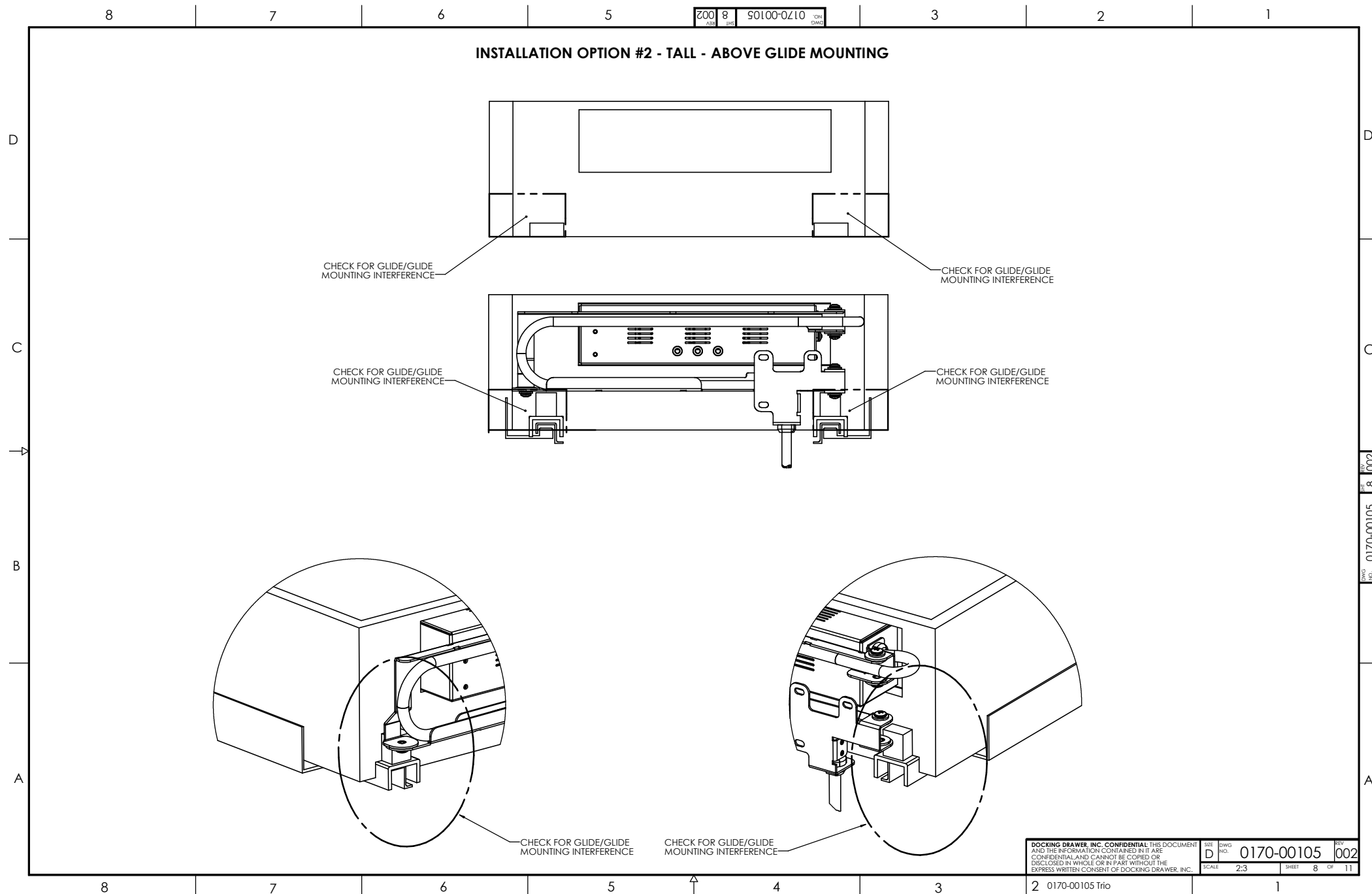
Docking Drawer Trio for Tall Drawers





Docking Drawer Trio for Tall Drawers

[Back to Contents](#) →

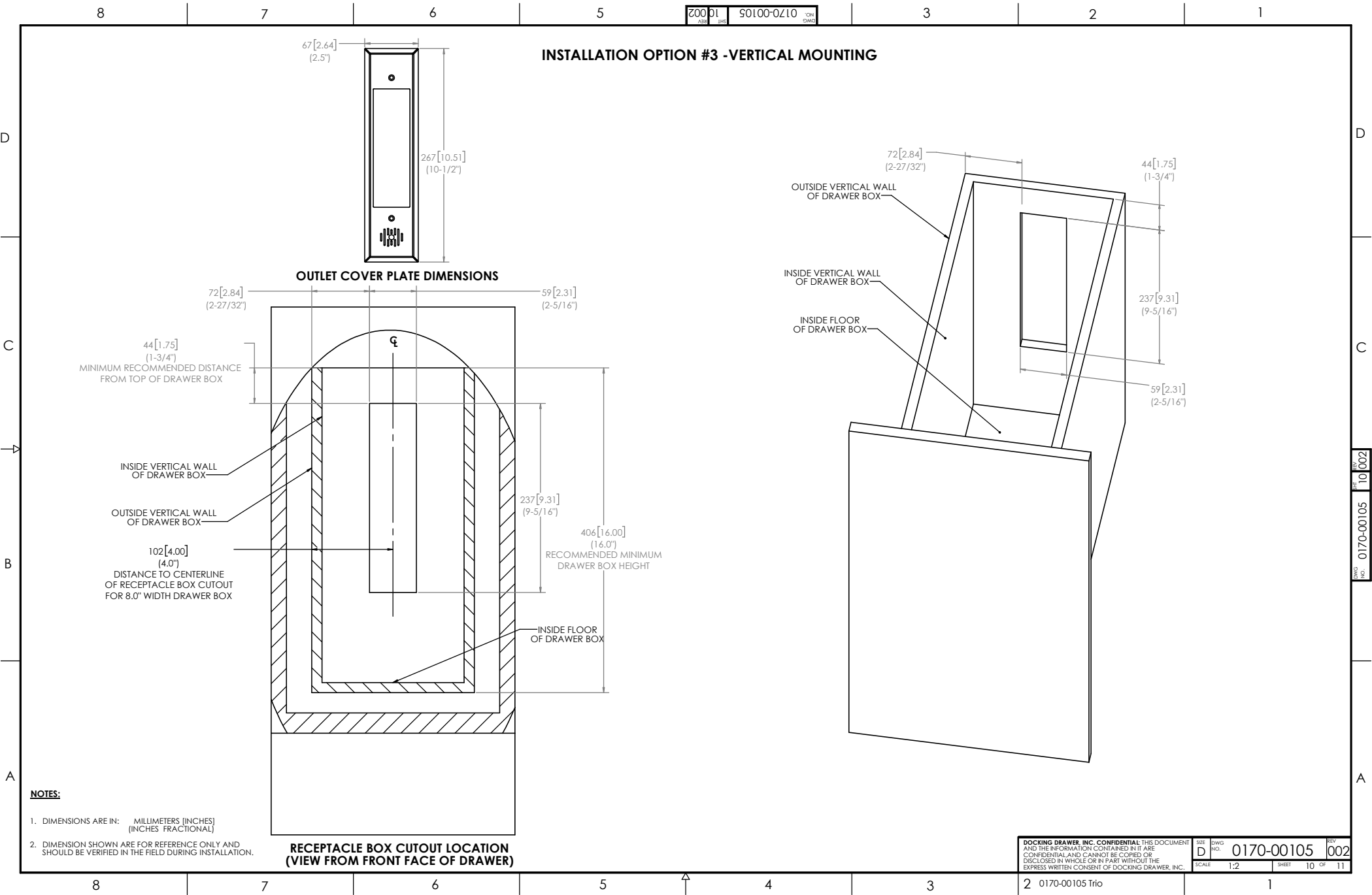


[Back to Contents](#) →



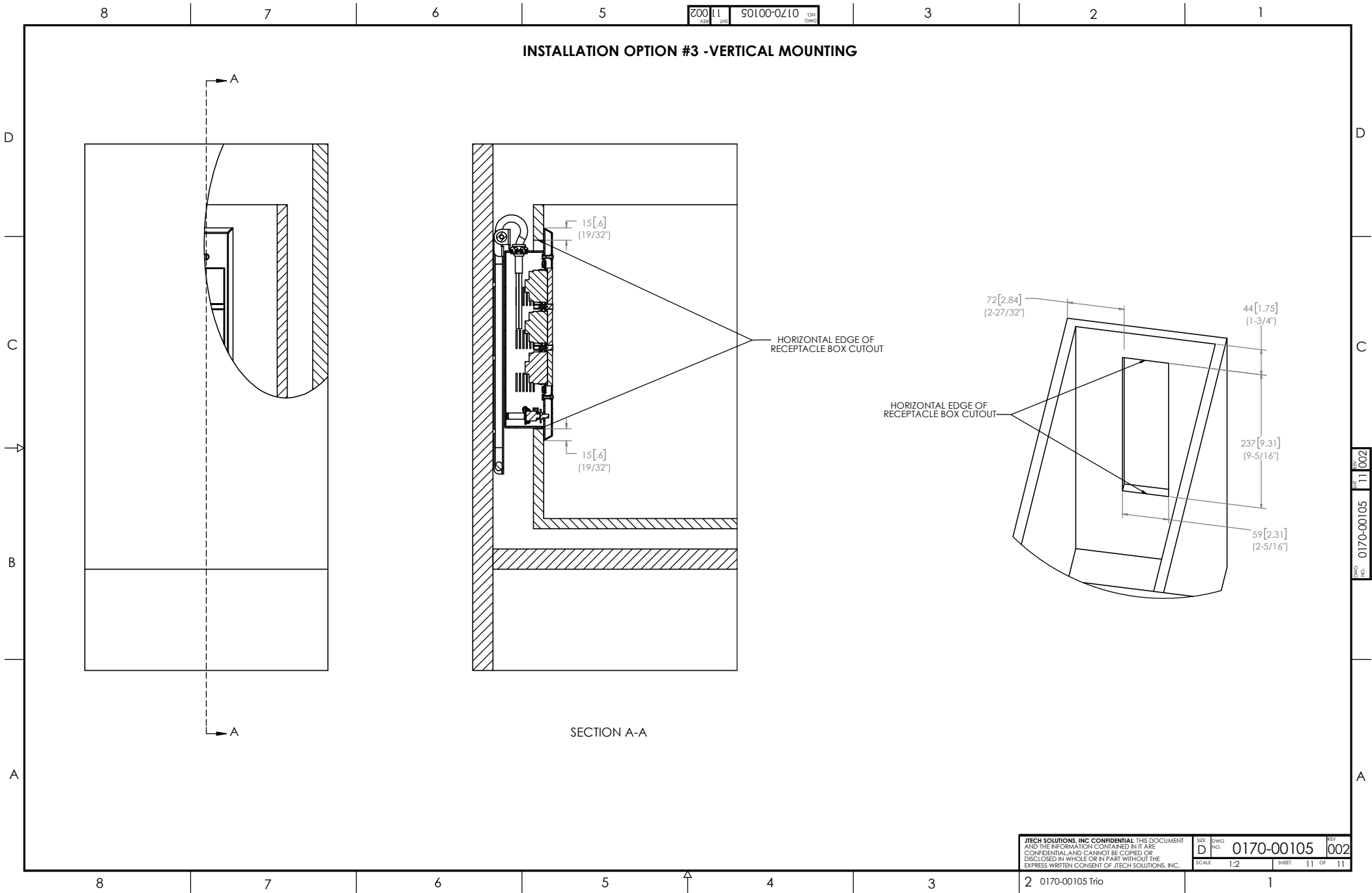
Docking Drawer Trio for Vertical Drawers

[Back to Contents](#) →



Docking Drawer Trio for Vertical Drawers

[Back to Contents](#) →



Get More Specs

All the specs and drawings needed to plan your in-drawer outlet project.

[Download the Spec Book](#)

We're Here to Help

support@dockingdrawer.com

Email us here for help with your technical and project planning questions or with any other specification questions.

Docking Drawer®

