

Docking Drawer®

Docking Drawer Trio Series
IN-DRAWER OUTLET SPEC BOOK
Version 2



Table of Contents

Project Planning	3	Planning Resources & Downloads	22
Outlet Uses	4	Tear Sheets	
Outlet Anatomy	5	DXF, STEP and Solidworks Files	
Outlet Dimensions	6	Mounting Diagrams	
Outlet Orientation	7	Electrical Planning Guide	
Features	8	Locating In-Cabinet Power	
Specify by Drawer Type	9	Cord Length	
Overview		Electrical Certifications	
Shallow Drawer			
Tall Drawer			
Vertical Drawer			
Mounting Diagrams for Blum, Grass,			
and Häfele Metal Drawer Systems			
Specify by Part Number	14	Installation Resources & Downloads	28
Part Numbers		Installation Manuals	
Outlet Configuration Options		Cutout Templates	
Additional Options	18		
Docking Drawer Canisters			

Project Planning for Trio Series Outlets

Docking Drawer Trio Series outlets can be installed at any point, whether you are undergoing a complete renovation or simply want to add an in-drawer outlet to an existing drawer. Although the installation process may look a little different depending on your situation. Here are some tips:

Plan at any time

Beginning of project

It's easiest to start planning before you begin your project as the electrician can rough in electrical where needed.

Middle of project

It's easy to install in the middle of your project when the worktop is off and the area behind the drawer box is still easily accessible.

End of project

It's still easy to install at the end of your project when the worktop is on. It will just be a tighter space to work in and you will have to remove the drawer boxes to access the back cabinet or furniture wall.

How to Get Started

Specifying a Docking Drawer into any type of project is simple. You can specify an outlet in 2 ways:

[By Drawer Type](#)

[By Part Number](#)

Install at any place

At the Factory

The cabinet manufacturer can install at the factory.

In the Shop

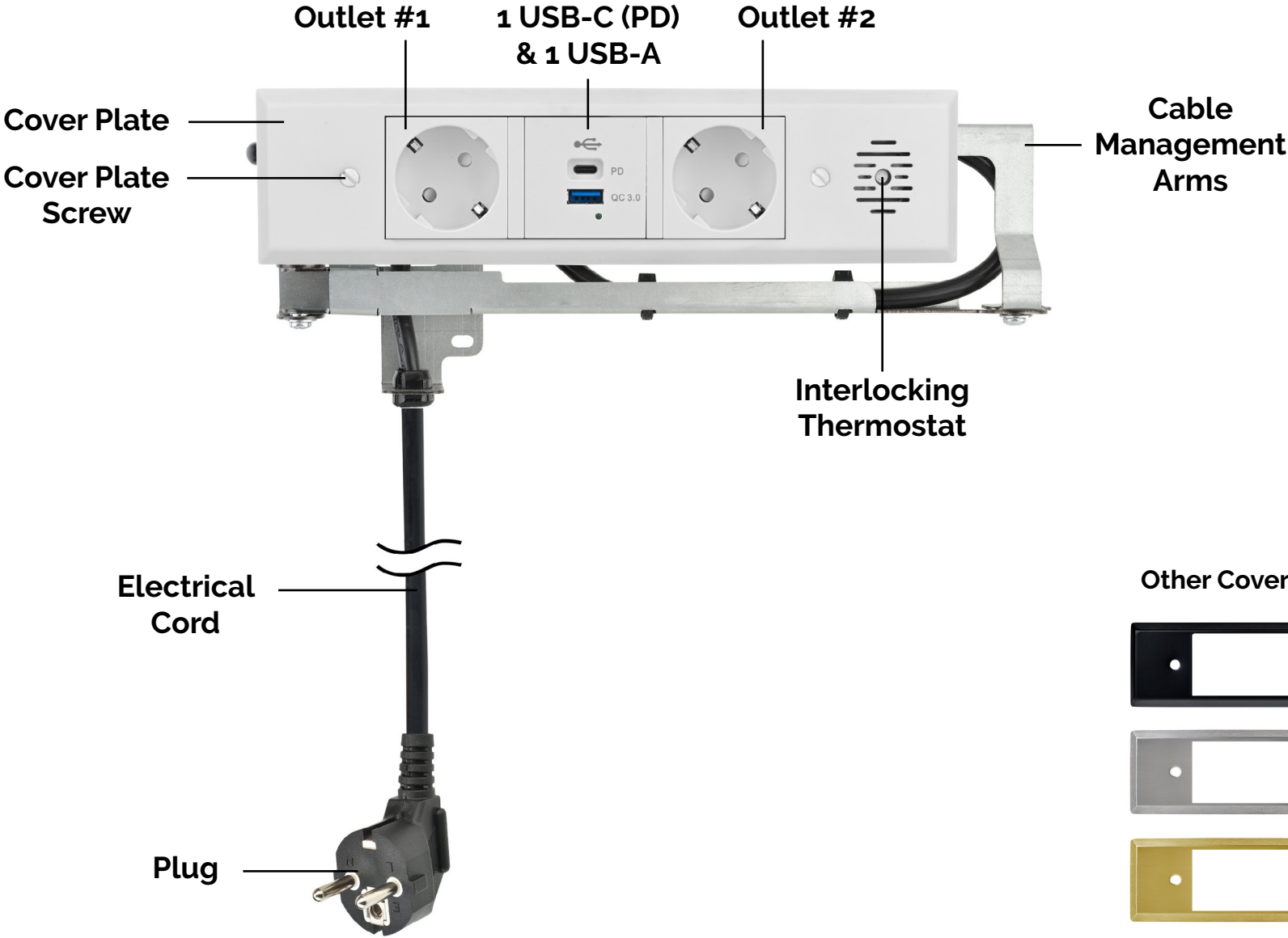
The cabinet maker or electrician can install in the shop.

On Location

The tradesperson or homeowner can install on location.

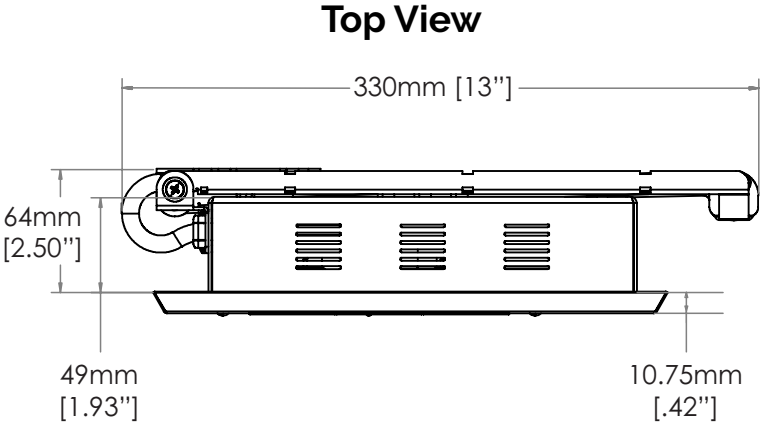
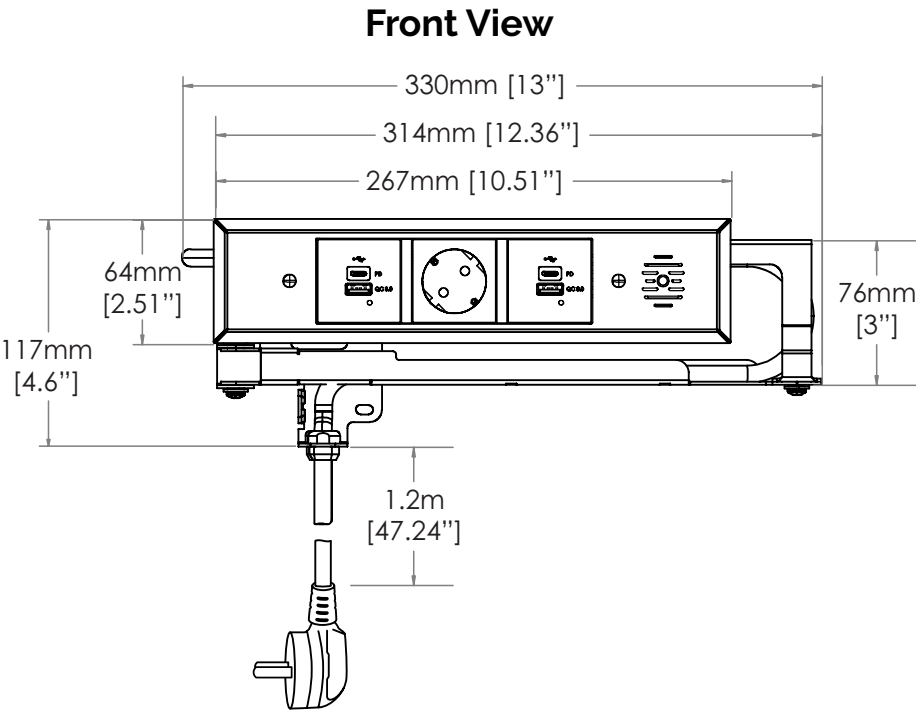


Outlet Anatomy for Trio Series Outlets



Outlet Dimensions of a Trio Series Outlet

Outlet Width	330mm (13")
Outlet Height	117mm (4.6")
Outlet Depth	64mm (2.5")
Receptacle Box Depth	49mm (1.93")
Cover Plate Height	64mm (2.51")
Cover Plate Width	267mm (10.51")
Cover Plate Thickness	10.75mm (.42")
Cable Management Arms Height	76mm (3")
Cord Length	1.2m (47.24")



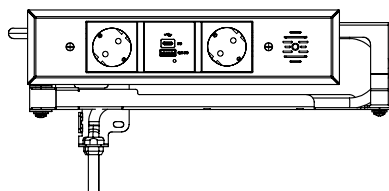
Outlet Orientation for Trio Series Outlets

Docking Drawer Trio outlets can be positioned in a variety of orientations to fit any cabinet and every project.

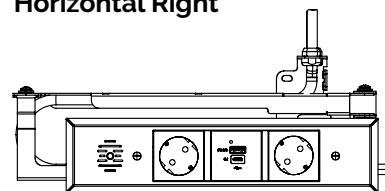
Horizontal Mounting

Trio outlets can be mounted horizontally and facing to the left or right.

Horizontal Left



Horizontal Right



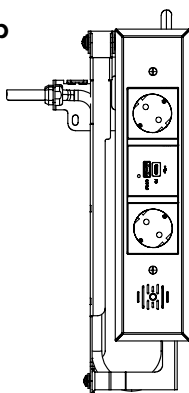
Pro Tip

Trio outlets can be rotated 360 degrees, facing left, right, up or down, referring to the cord exit point.
Ex: Horizontal left - the receptacle box is horizontal and the cord exits on the left side of the outlet.

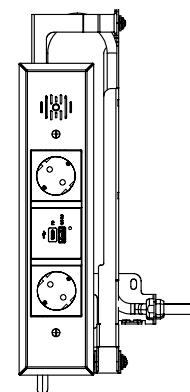
Vertical Mounting

Trio outlets can be mounted vertically and facing to up or down.

Vertical Up



Vertical Down



Features of Trio Series Outlets

Electrical Certification	<u>CE Listed</u>
Interlocking Safety Features	The Interlock Thermostat de-energizes the outlet when the temperature exceeds 49°C.
Electrical Connection	1.2m cord with Type F plug
Wire Gauge	14 AWG wire cable
Cable Protection	Ultra flexible cable jacket and cable strain reliefs prevent tension and wear
Outlet Features	Features a variety of configurations including Type F outlet, USB-C (PD) and USB-A and can connect up to 5 devices.
Product Testing	Assemblies are cycle tested over 500,000 times to ensure a long life of safe operation
Cover Plate Finishes	White, Black, Stainless Steel and Brass
Warranty	2 Years
Country of Origin	Made in Mexico
Service	If needed, the outlet can be easily separated from the drawer box for maintenance or service

Specify by Drawer Type

11

Shallow Drawer

11

Tall Drawer

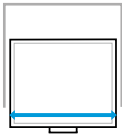
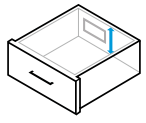
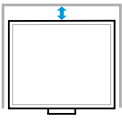
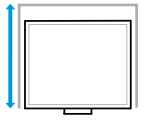
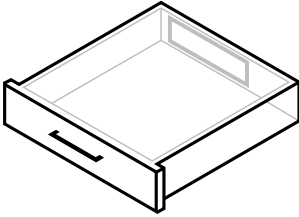
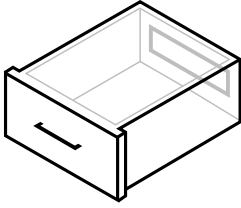
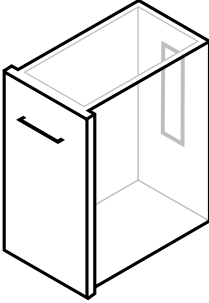
12

Vertical Drawer

13

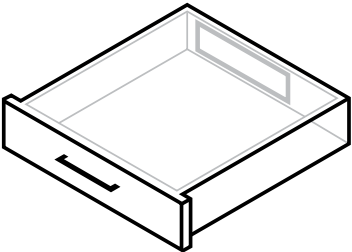
Mounting Diagrams for Blum, Grass,
and Häfele Metal Drawer Systems

Specify by Drawer Type

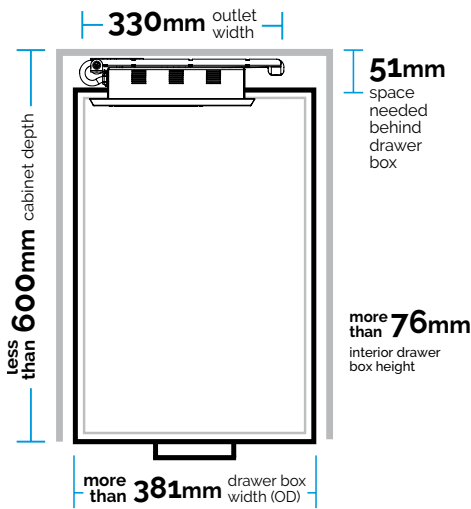
If your drawer type is the following...	 Minimum Drawer Box Width (Outer Dimension)	 Minimum Interior Drawer Box Height	 Minimum Space Behind Drawer Box	 Maximum Base Cabinet Depth
 <p>Shallow Drawer <i>Most often found in kitchens, closets, offices, side tables, entryway tables, and retail projects.</i></p>	<p>381mm or more</p>	<p>76mm or more</p>	<p>51mm or more</p>	<p>600mm or less</p>
 <p>Tall Drawer <i>Most often found in vanities, dressing tables, and with above-glide mounting.</i></p>	<p>330mm or more</p>	<p>102mm or more</p>	<p>51mm or more</p>	<p>600mm or less</p>
 <p>Vertical Drawer <i>Most often found in vanities, dressing tables, and kitchen pull outs.</i></p>	<p>203mm or more</p>	<p>330mm or more</p>	<p>51mm or more</p>	<p>600mm or less</p>

Shallow & Tall Drawer Types Cabinet Specifications

Shallow Drawer



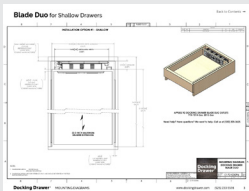
Outlet Width	330mm
Minimum Drawer Box Width (Outer Dimension)	381mm or more
Minimum Interior Drawer Box Height	76mm or more
Minimum Space Behind Drawer Box	51mm or more
Maximum Base Cabinet Depth	600mm or less



Pro Tip

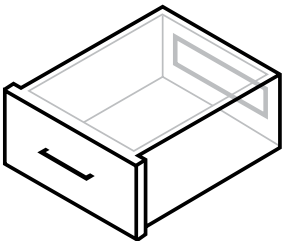
Most often found in kitchens, closets, offices, side tables, entryway tables, and retail projects.

[Download Mounting Diagrams](#) →

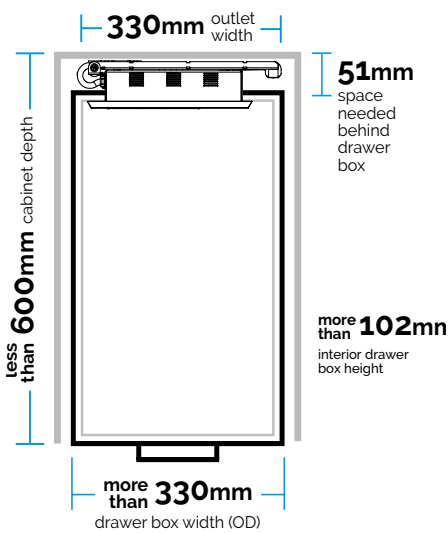


Most Popular Outlet:
3040-1140

Tall Drawer



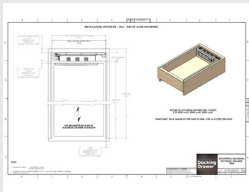
Outlet Width	330mm
Minimum Drawer Box Width (Outer Dimension)	330mm or more
Minimum Interior Drawer Box Height	102mm or more
Minimum Space Behind Drawer Box	51mm or more
Maximum Base Cabinet Depth	600mm or less



Pro Tip

Most often found in vanities when the outlet is mounted above the drawer glides.

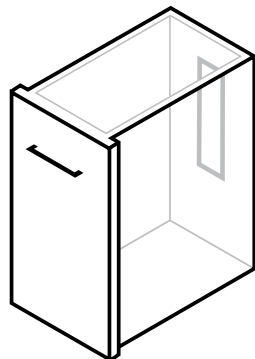
[Download Mounting Diagrams](#) →



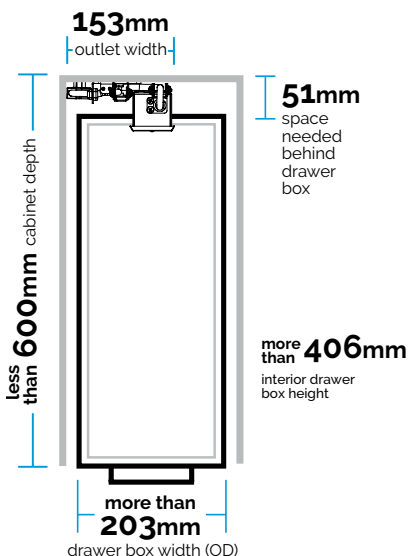
Most Popular Outlet:
3040-1440

Vertical Drawer Type Cabinet Specifications

Vertical Drawers



Outlet Width	153mm
Minimum Drawer Box Width (Outer Dimension)	203mm or more
Minimum Interior Drawer Box Height	406mm or more
Minimum Space Behind Drawer Box	51mm or more
Maximum Base Cabinet Depth	600mm or less

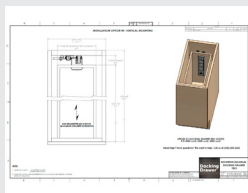


Pro Tip

Most often found in vanities and kitchen pull outs.

If the vertical drawer is less than 330mm tall, a channel can be cut into the bottom of the cabinet to utilize the toe kick space.

Download Mounting Diagrams →



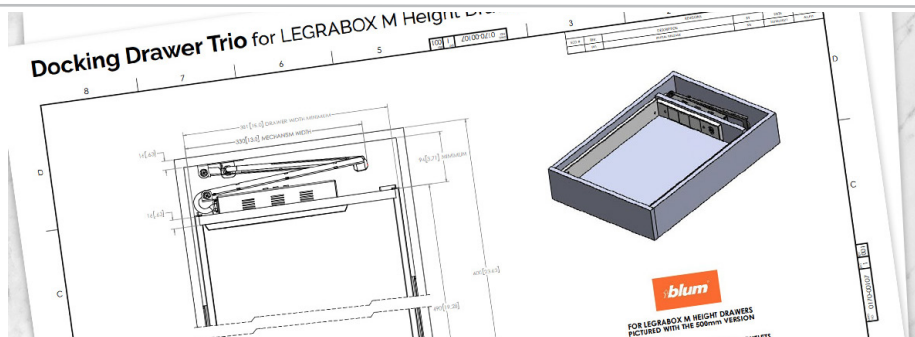
Most Popular Outlet:
3040-1440

Mounting Diagrams for Blum, Grass, and Häfele Metal Drawer Systems

See mounting diagrams specific to the market's popular metal drawer systems.



LEGRABOX & TANDEMBOX
drawer systems

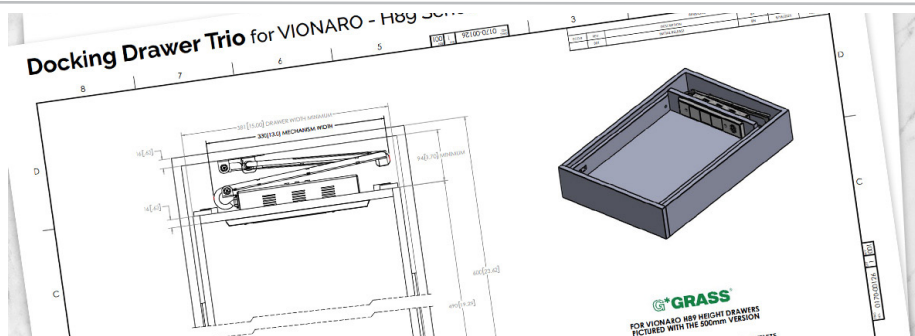


Pro Tip

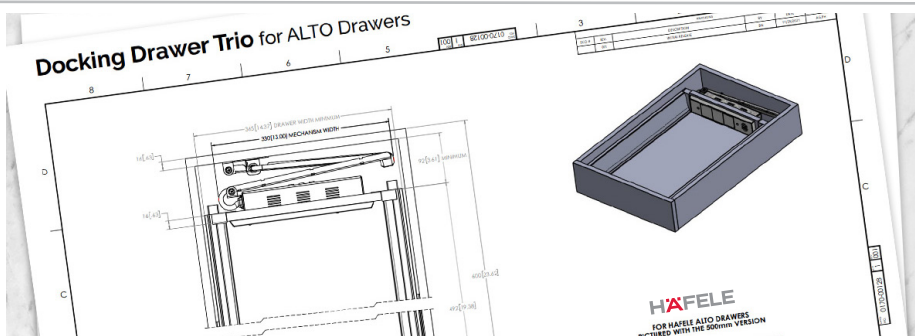
Mounting Diagrams are available to download at dockingdrawer.com/downloads



Vionaro & Nova Pro Scala
drawer systems



ALTO & MATRIX
drawer systems





Specify by Part Number

15

Part Numbers

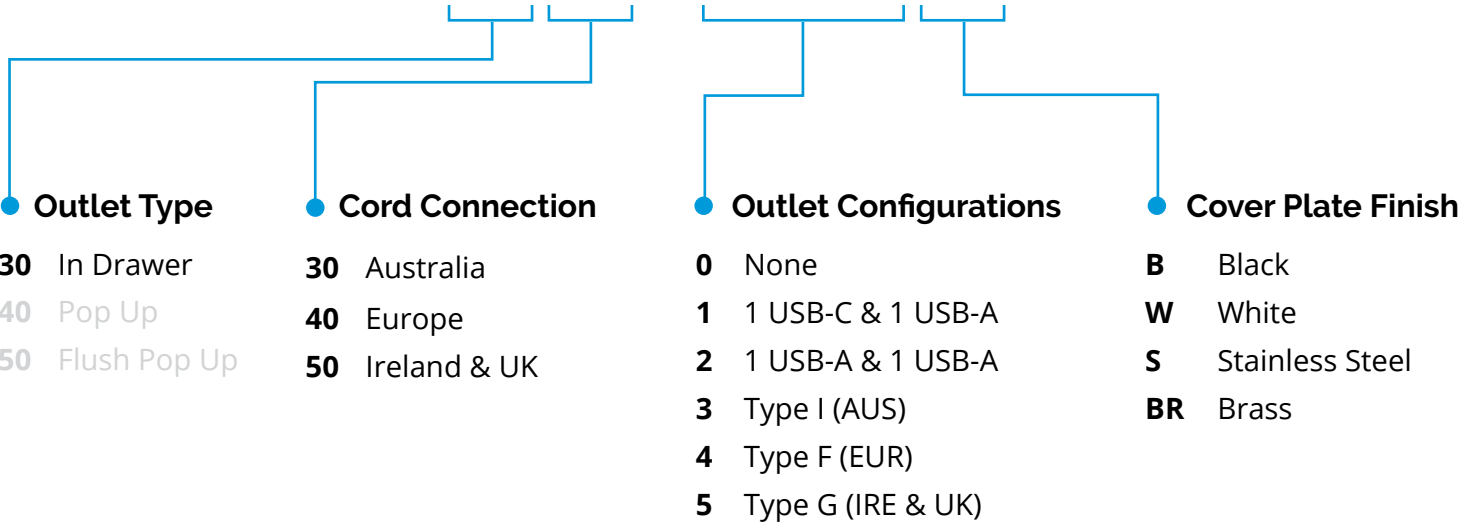
17

Outlet Configuration Options

Part Numbers for Docking Drawer Trio Outlets


Docking Drawer Trio Outlets

3040 - 1440 W



Part Numbers for Trio Series Outlets (3040-xxxxx)

BEST
SELLER



Docking
Drawer Trio
3040-1440W


10 amp

☐ 3040-1440W

☒ 3040-1440B

☐ 3040-1440S

1 USB-C (PD) and 1
USB-A, 2 EUR Type F
outlets



Docking
Drawer Trio
3040-1140W

10 amp

☐ 3040-1140W

☒ 3040-1140B

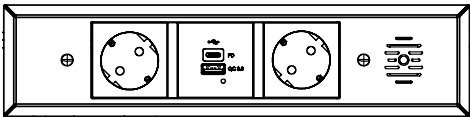
☐ 3040-1140S



2 USB-C (PD) and 2
USB-A, 1 EUR Type F
outlet

Outlet Configuration Options for Trio Series Outlets

We offer a variety of configuration options for Trio Series outlets. Mix and match configurations to create the best solution to fit the needs of your project.

ex: **3040-1440W**



#	Outlet Configuration	Outlet Specifications
1	 1 USB-C (PD) & 1 USB-A	USB-C (PD): 5V@3A, 9V@3A, 12V@2.5A, 15V@2A, 20V@1.5A USB-A: 5V@3A, 9V@3A, 12V@2.5A, 20V@1.5A Total output power: Max 30W
4	 Type F	10 amps @ 240 VAC

Additional Options

19

Docking Drawer Canisters



Docking Drawer Canisters

Create the perfect styling station with Docking Drawer Canisters, featuring a variety of sizes to fit any blow dryer, hair straightener or curling iron. These hot tool holders are made to fit vanity organizers and safely store hot appliances even while they are in use.



Pro Tip

Download DXF, STEP and Solidworks files to import into your project planning software at dockingdrawer.com/downloads



Part Numbers for Stainless Steel Docking Drawer Canisters

BEST
SELLER



3" Canister

0024-00503

Height to Lip: 4.52" (115mm)

Diameter: 3.00" (76mm)

Capped Bottom

BEST
SELLER



2" Canister

0024-00502

Height to Lip: 4.54" (115mm)

Diameter: 2.00" (51mm)

Capped Bottom



5" Canister

0024-00005S

Height to Lip: 6.40" (162mm)

Diameter: 4.84" (123mm)

Closed Bottom

Part Numbers for Chrome Docking Drawer Canisters



3" Canister
0024-00010S

Height to Lip: 2.85" (72mm)
Diameter: 3.00" (76mm)
Open Bottom



2" Canister
0024-00020S

Height to Lip: 4.83" (123mm)
Diameter: 2.00" (51mm)
Open Bottom



1.5" Canister
0024-00030S

Height to Lip: 4.89" (124mm)
Diameter: 1.50" (38mm)
Open Bottom



2" Canister
0024-00020CR

Height to Lip: 5.50" (140mm)
Diameter: 2.00" (51mm)
Crimped Bottom



1.5" Canister
0024-00030CR

Height to Lip: 5.50" (140mm)
Diameter: 1.50" (38mm)
Crimped Bottom

A modern wooden bedside table with a built-in power strip and a drawer. The table is made of dark wood and has a white power strip integrated into its side. The power strip features two European-style power outlets, two USB ports (one labeled 'PD' and 'QC 3.0'), and a fan. A black smartphone is placed on the table surface next to a circular black object. A drawer is pulled out from the bottom of the table, revealing a dark, textured interior. The background shows a bed with white linens.

Planning Resources

- 23** | Tear Sheets
- 24** | DXF, STEP and Solidworks Files
Mounting Diagrams
- 25** | Electrical Planning Guide
- 27** | Electrical Certifications

Planning Resources Tear Sheets

Docking Drawer provides all of the necessary resources to plan a Trio Series outlet installation.

[Simply click this link to download now.](#)

Tear Sheets

Download PDF Tear Sheets to easily share product summaries with your team.



Pro Tip

Tear Sheets are available to download for every outlet at dockingdrawer.com/downloads

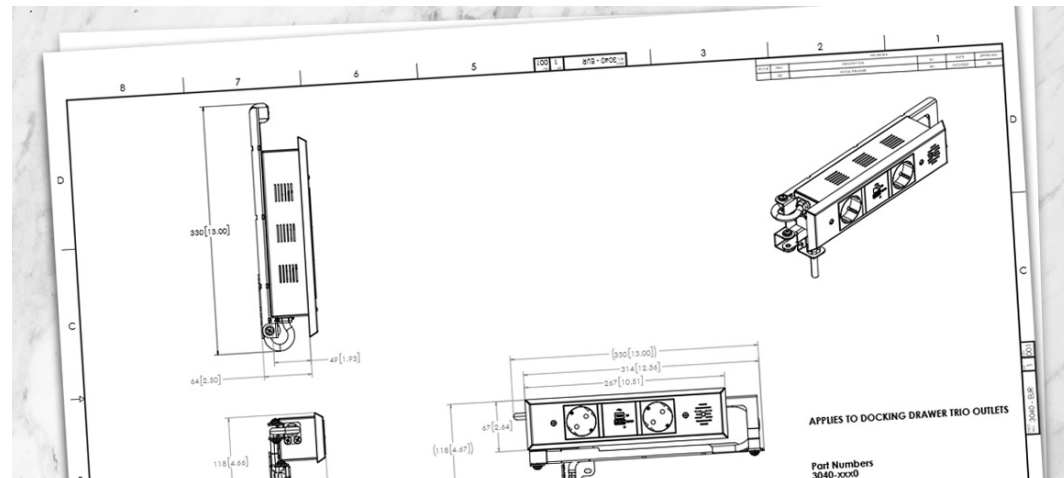
Planning Resources DXF and STEP Files & Mounting Diagrams

Docking Drawer provides all of the necessary resources to plan a Trio Series installation.

[Simply click this link to download now.](#)

DXF, STEP and Solidworks Files

Download DXF (2D), STEP (3D), SLDDRW and SLDPRT (Solidworks) files to import into planning programs.

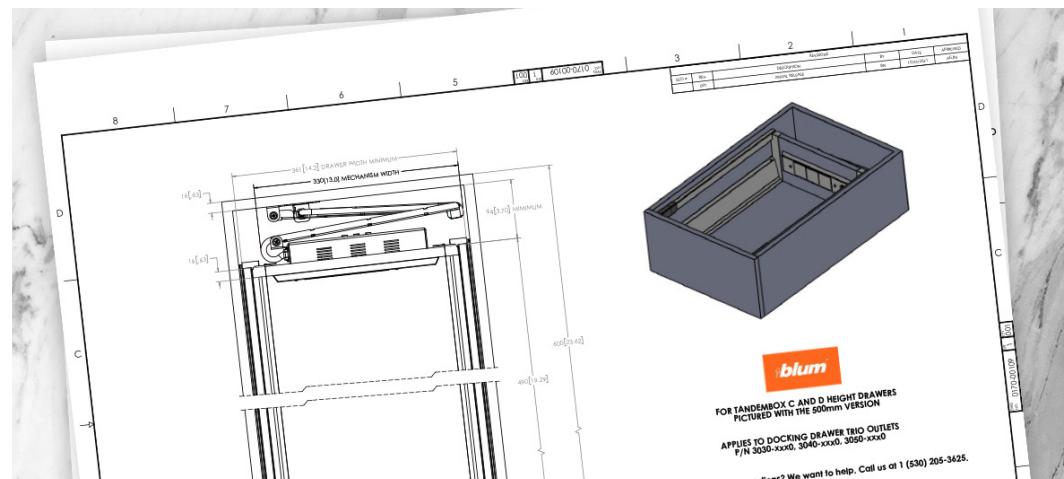


Pro Tip

DXF, STEP and Solidworks files are available to download at dockingdrawer.com/downloads

Mounting Diagrams

Detailed engineering diagrams showing cabinet specifications and how to mount the outlet, including into Blum and Grass drawer box systems.



Pro Tip

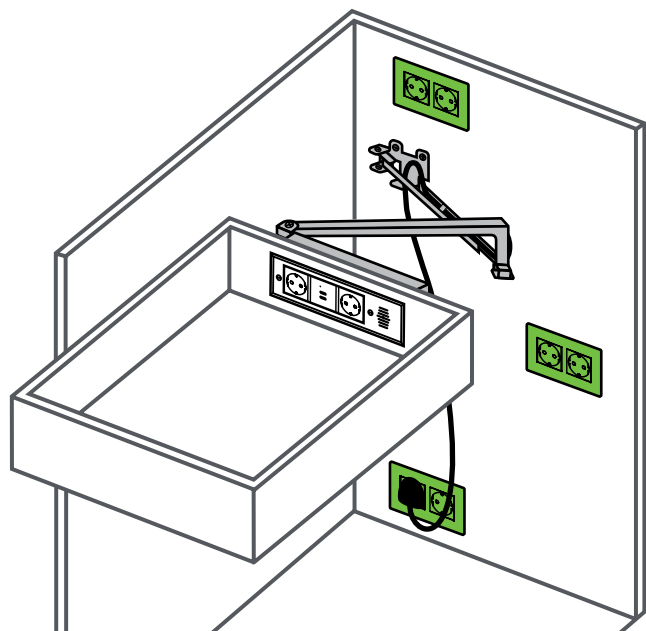
Mounting Diagrams are available to download at dockingdrawer.com/downloads

Electrical Planning

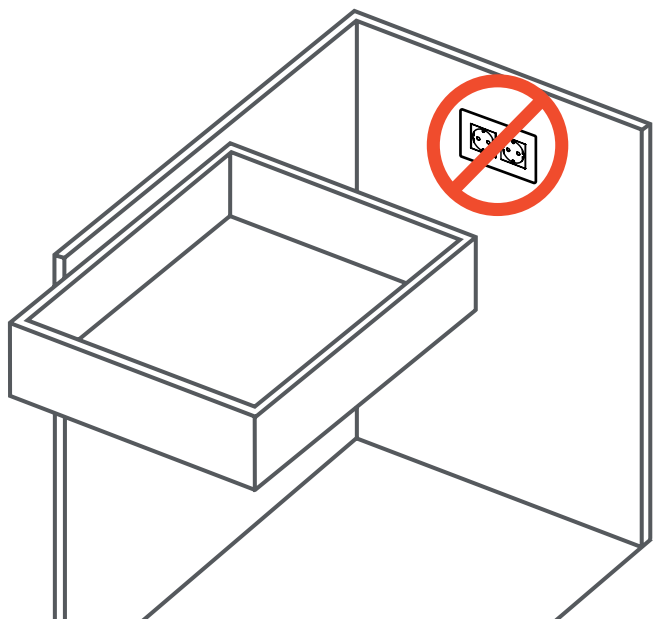
Locating In-Cabinet Power

Locating in-cabinet power is simple. The in-cabinet outlet needs to be within 1.2m of the Trio Series outlet rear mounting bracket.

Recommended Locations for the In-Cabinet Electrical Supply



Where NOT to Locate the In-Cabinet Electrical Supply



Pro Tip

Don't locate the in-cabinet electrical supply directly behind the drawer box as there may not be enough room for the drawer to properly close.

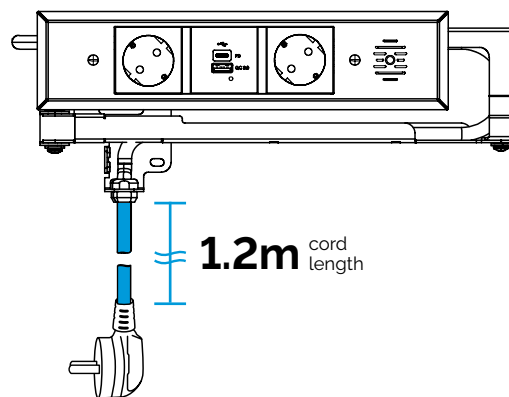
*Items marked in green are not included

Electrical Planning Trio Series Cord Length

Locating in-cabinet power is simple. The in-cabinet outlet needs to be within 1.2m of the Trio Series outlet rear mounting bracket.

Cord Length

Docking Drawer Trio in drawer outlets feature a 1.2m long cord*.



Need Electrical Listings?

Download detailed electrical listing reports at dockingdrawer.com/downloads

Electrical Planning Electrical Certifications

Docking Drawer provides all of the necessary resources to plan a Trio Series outlet installation.

[Simply click this link to download now.](#)

Electrical Certifications

Download CE Electrical Certifications to share with your electrician or inspector.



Pro Tip

Electrical Certifications are available for download at dockingdrawer.com/downloads

Installation Resources

29

Installation Manuals
Cutout Templates



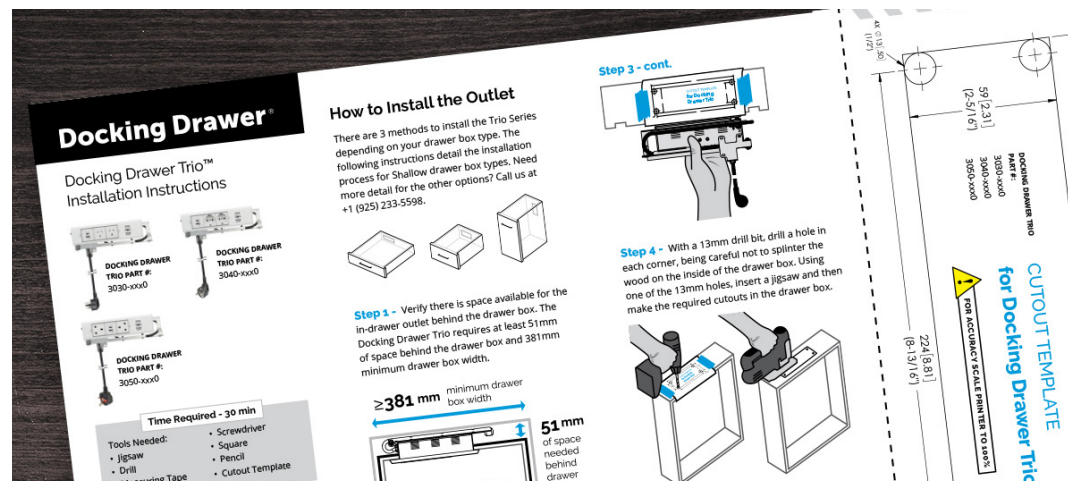
Installation Resources for Trio Series In-Drawer Outlets

Docking Drawer provides all of the resources you need for a smooth Trio Series in-drawer outlet installation.

[Simply click this link to download now.](#)

Installation Manuals

Step by step instructions for installing Trio Series in-drawer outlets.

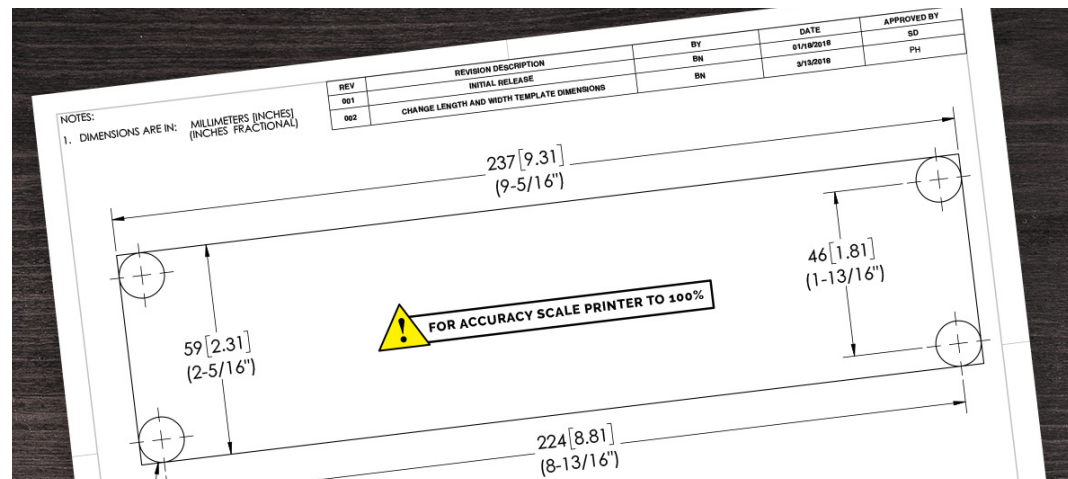


Pro Tip

Installation Manuals are available to download at dockingdrawer.com/downloads

Cutout Templates

Printable PDF templates to guide your receptacle box cutout placement.



Pro Tip

Cutout Templates are available to download at dockingdrawer.com/downloads

Share Your Project & Get Paid

SHARE **YOUR** PROJECT &
earn up to
\$500
USD



Submit your
photos



Add project
details



Get paid

FOR MORE DETAILS VISIT
[DOCKINGDRAWER.COM/PHOTOBUYING](https://dockingdrawer.com/photobuying)



Order Now

Order directly from Docking Drawer or from your Hardware Distributor.

[See our Partners & Distributors](#)

We're Here to Help

sales@dockingdrawer.com

Email us here with your sales and project planning questions.

support@dockingdrawer.com

Email us here with your technical questions.

Docking Drawer®

**DOWNLOAD
LITERATURE
FOR TRIO
SERIES
OUTLETS →**

