

Docking Drawer®

Flush Pop Up Series

SPEC BOOK

February 2022



Table of Contents

Project Planning 3

Outlet Uses 4

Outlet Anatomy 5

Outlet Dimensions 6

 Flush Pop Up Quad

 Flush Pop Up Trio

 Flush Pop Up Duo

Outlet Orientation 9

Features 10

Specify by Part Number 11

 Part Numbers

 Outlet Configuration Options

Planning Resources & Downloads 16

 Tear Sheets

 Mounting Diagrams

 Electrical Planning Guide

 Electrical Certifications

Installation Resources & Downloads 20

 Installation Manuals

 Cutout Templates

Project Planning for Flush Pop Up Series Outlets

Docking Drawer Flush Pop Up Series outlets can be installed at any point, whether you are undergoing a complete renovation or simply want to add a pop up outlet to an existing worktop. Although the installation process may look a little different depending on your situation. Here are some tips:

Plan at any time

Beginning of project

It's easiest to start planning before you begin your project as the electrician can rough in electrical where needed.

Middle of project

It's easy to install in the middle of your project when the worktop is off and the area under the worktop is still easily accessible.

End of project

It's still easy to install at the end of your project when the worktop is on. It will just be a tighter space to work in and you will have to remove the drawer boxes to access the back cabinet or furniture wall.

How to Get Started
Specifying a Docking Drawer Pop Up into any type of project is simple. You can specify an outlet in by choosing the configuration that works best for your project.

Install at any place

At the Factory

The cabinet manufacturer can install at the factory.

In the Shop

The cabinet maker or electrician can install in the shop.

On Location

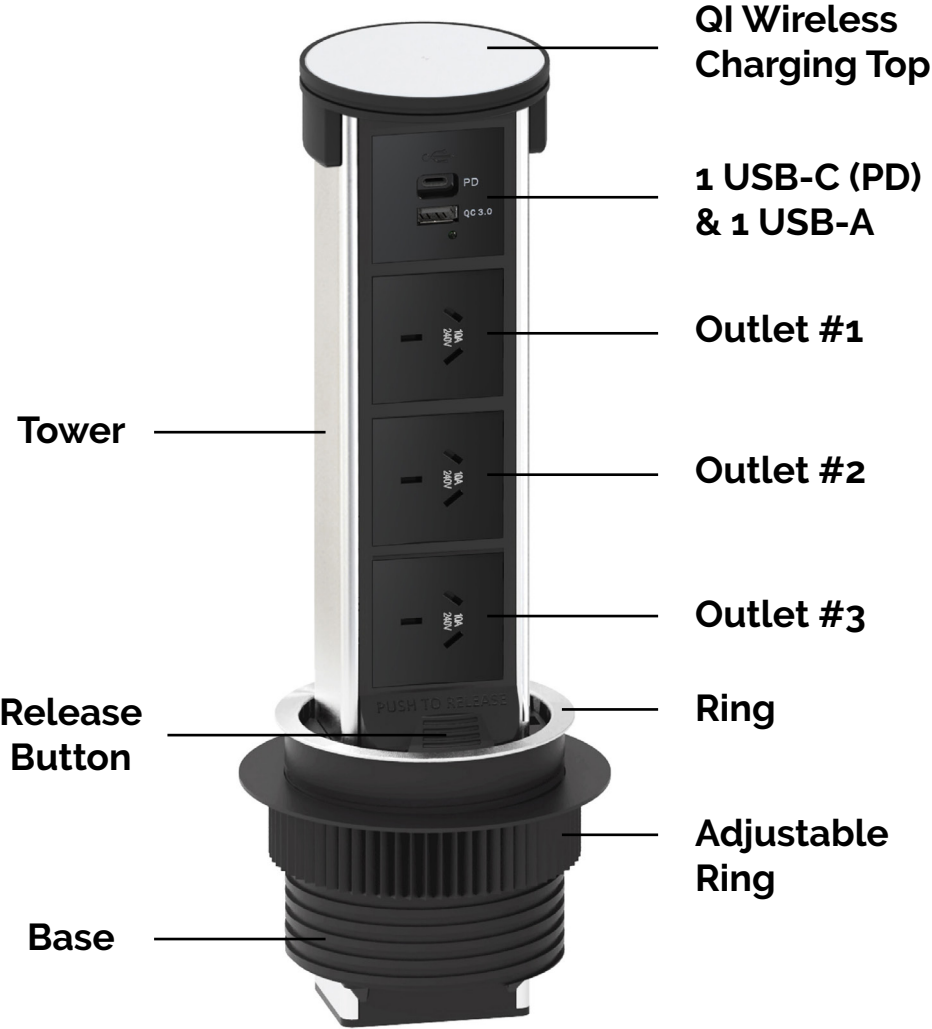
The tradesperson or homeowner can install on location.

Outlet Uses Connect Any Device



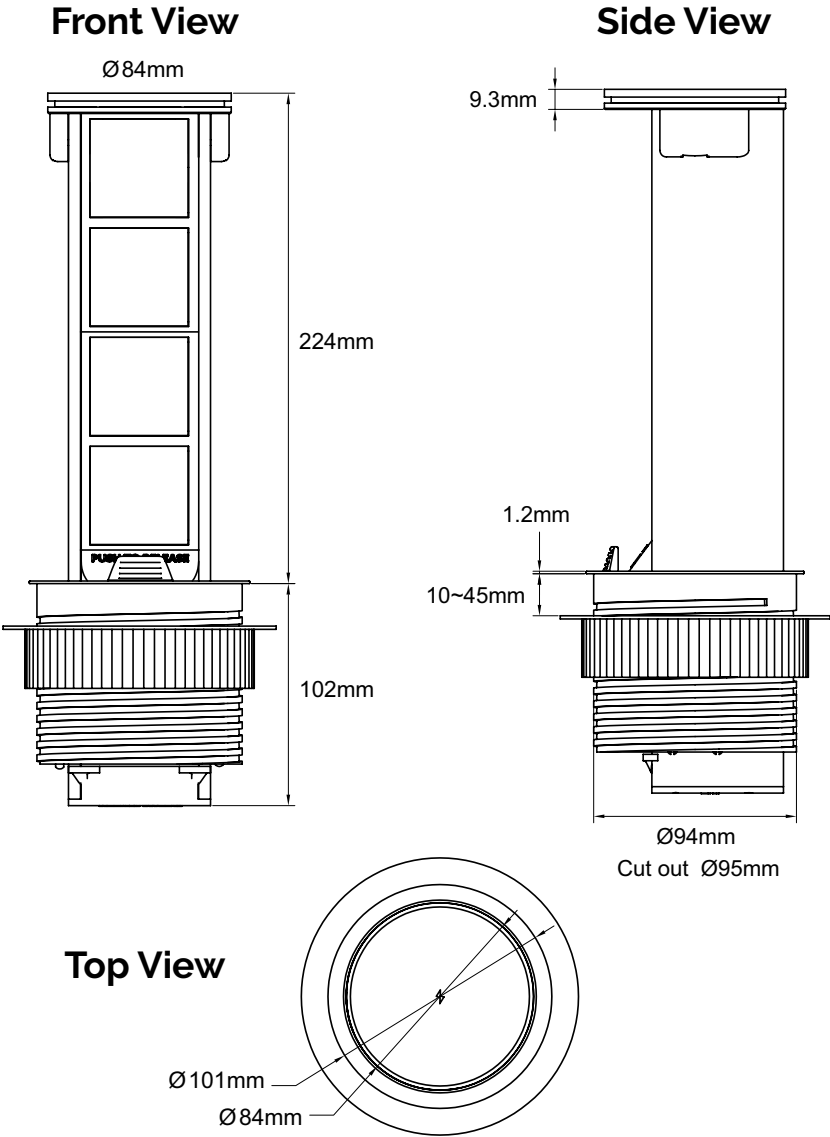
...and more! The possibilities are endless.

Outlet Anatomy for Flush Pop Up Series Outlets



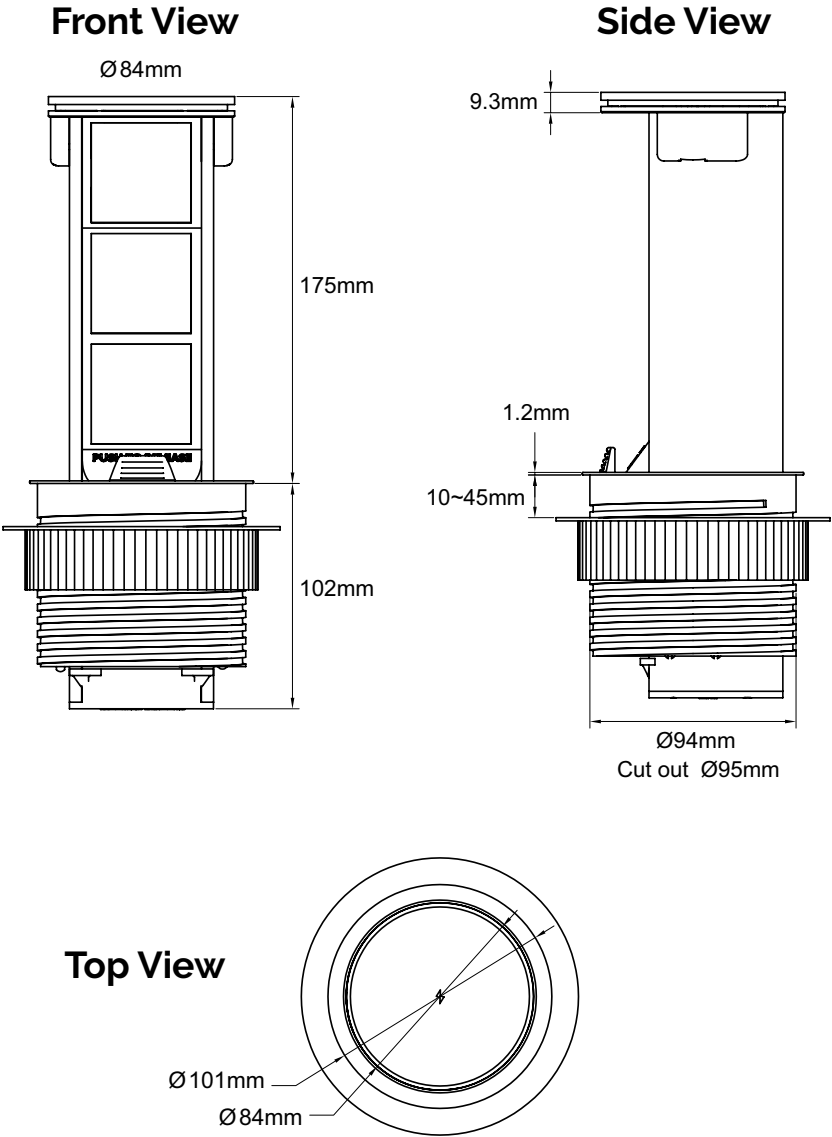
Outlet Dimensions of a Flush Pop Up Quad Outlet

Top Diameter	84mm
Tower Height	224mm
Base Height	102mm
Top Thickness	9.3mm
Ring Thickness	1.2mm
Available space for worktop	10-45mm
Base Diameter	94mm
Cut Out Size	95mm
Top & Ring Diameter	101mm



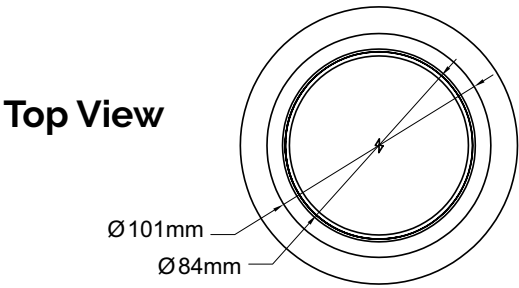
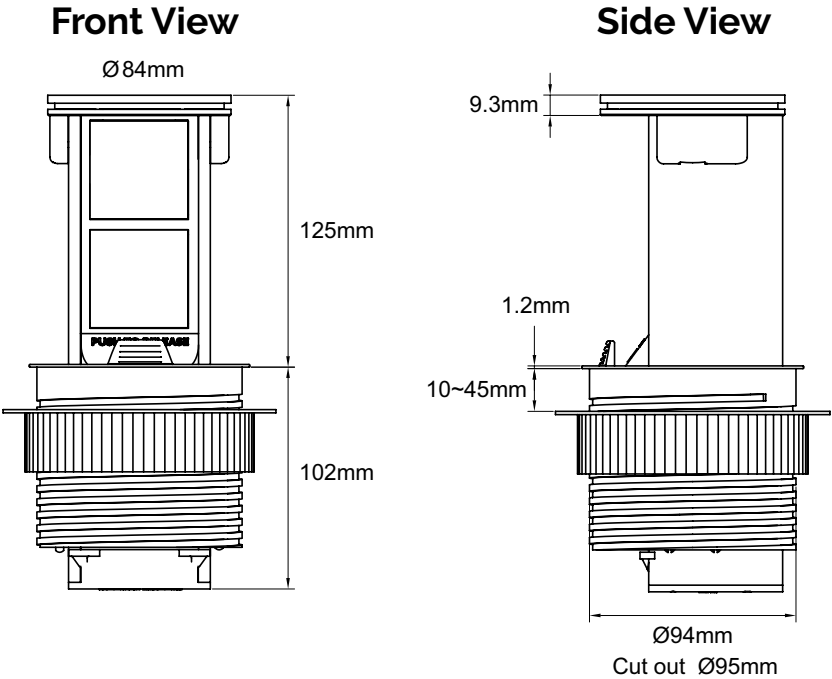
Outlet Dimensions of a Flush Pop Up Trio Outlet

Top Diameter	84mm
Tower Height	175mm
Base Height	102mm
Top Thickness	9.3mm
Ring Thickness	1.2mm
Available space for worktop	10-45mm
Base Diameter	94mm
Cut Out Size	95mm
Top & Ring Diameter	101mm



Outlet Dimensions of a Flush Pop Up Duo Outlet

Top Diameter	84mm
Tower Height	125mm
Base Height	102mm
Top Thickness	9.3mm
Ring Thickness	1.2mm
Available space for worktop	10-45mm
Base Diameter	94mm
Cut Out Size	95mm
Top & Ring Diameter	101mm



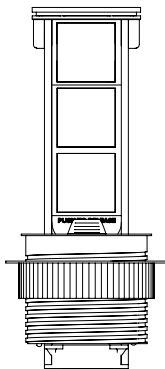
Outlet Orientation of a Flush Pop Up Series Outlets

Docking Drawer Flush Pop Up Series outlets can be positioned in a variety of orientations to fit any cabinet and every project.

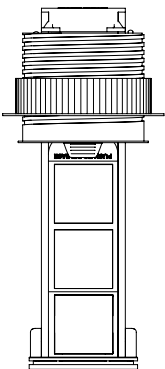
Vertical Mounting

Pop Up outlets can be mounted vertically so that they pop UP from a worktop or pop DOWN from an upper cabinet.

Pop Up



Pop Down



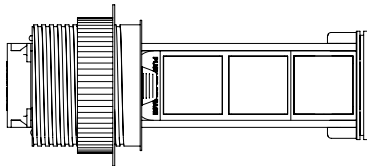
Pro Tip

Pop Up outlets can be rotated 360 degrees, facing left, right, up or down.

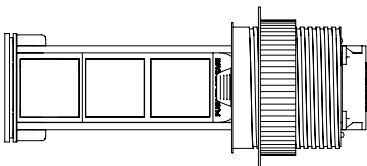
Horizontal Mounting

Pop Up outlets can be mounted horizontally so that they pop OUT from a wall or cabinet.

Pop Out Left



Pop Out Right



Features of Flush Pop Up Series Outlets

Electrical Certification	<u>Australian Certified for Safety and EMC</u>
Safety Features	Sealing ring prevents dust and debris from entering tower
Electrical Connection	2m cord with Type I plug
Outlet Features	Features a variety of configurations including AUS Type I outlet, USB-C (PD), USB-A, Qi Wireless Charging and can connect up to 7 devices.
Top Finishes	Black and Silver
Tower Finishes	Black and Aluminum
Outlet Finishes	Black and White
Warranty	2 Years
Country of Origin	Made in China

Specify by Part Number

12

Part Numbers

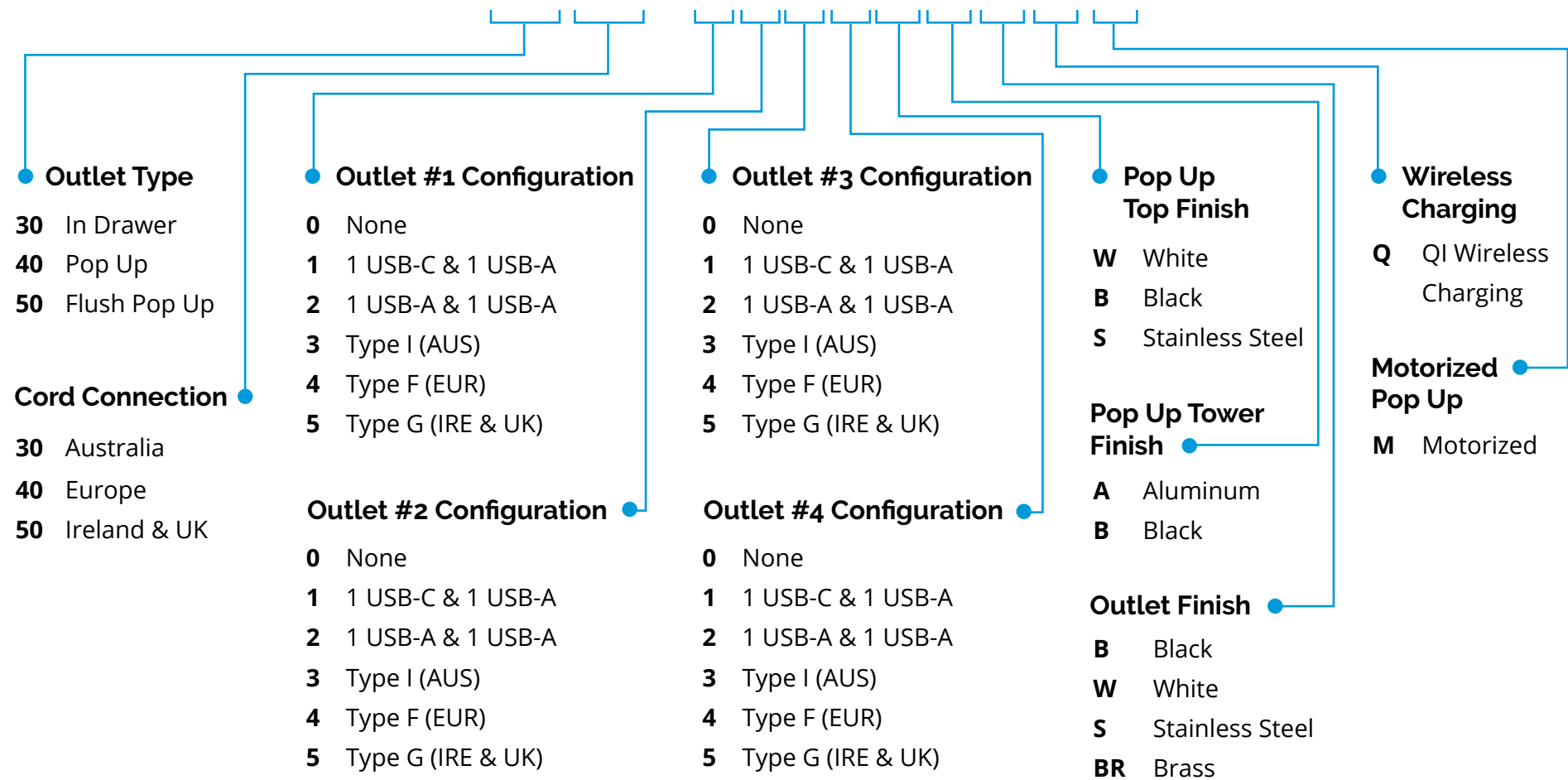
13

Outlet Configuration Options

Part Numbers for Docking Drawer Trio & Pop Up Outlets

Docking Drawer Trio & Pop Up Outlets

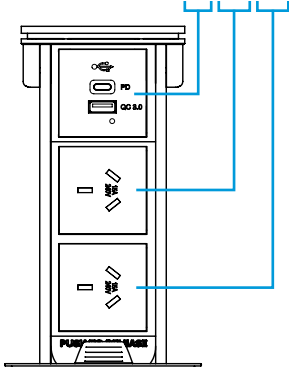
5030-1133BABQM


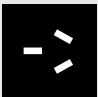



Outlet Configuration Options for Flush Pop Up Series Outlets

We offer a variety of configuration options for Flush Pop Up Series outlets. Mix and match configurations to create the best solution to fit the needs of your project.

ex: 5030-1330



#	Outlet Configuration	Outlet Specifications
1	 1 USB-C (PD) & 1 USB-A	USB-C (PD): 5V@3A, 9V@3A, 12V@2.5A, 15V@2A, 20V@1.5A USB-A: 5V@3A, 9V@3A, 12V@2.5A, 20V@1.5A Total output power: Max 30W
3	 Type I	10 amps @ 240 VAC
	 Qi Wireless Charging Top	15 W

Part Numbers for Flush Pop Up Series Outlets (5030-xxxx)

	QUAD	TRIO	DUO
SILVER EDITION	<div><div><div></div><div></div><div></div><div></div></div><div></div><div><div>5030-1333SABQ</div><div>10 amp</div><div>1 USB-C (PD) and 1 USB-A, 3 AUS Type I Outlets</div></div></div>	<div><div><div></div><div></div><div></div></div><div></div><div><div>5030-1330SABQ</div><div>10 amp</div><div>1 USB-C (PD) and 1 USB-A, 2 AUS Type I Outlets</div></div></div>	<div><div><div></div><div></div></div><div></div><div><div>5030-1300SABQ</div><div>10 amp</div><div>1 USB-C (PD) and 1 USB-A, 1 AUS Type I Outlet</div></div></div>
	<div><div><div></div><div></div><div></div><div></div></div><div></div><div><div>5030-1133SABQ</div><div>10 amp</div><div>2 USB-C (PD) and 2 USB-A, 2 AUS Type I Outlets</div></div></div>	<div><div><div></div><div></div><div></div></div><div></div><div><div>5030-1130SABQ</div><div>10 amp</div><div>2 USB-C (PD) and 2 USB-A, 1 AUS Type I Outlet</div></div></div>	<div>Top - Silver Glass</div> <div></div>

Part Numbers for Flush Pop Up Series Outlets (5030-xxxx)

	QUAD	TRIO	DUO
BLACK EDITION	<div><div></div><div></div><div><div>5030-1333BBBQ</div><div>10 amp</div><div>1 USB-C (PD) and 1 USB-A, 3 AUS Type I Outlets</div></div></div>	<div><div></div><div></div><div><div>5030-1330BBBQ</div><div>10 amp</div><div>1 USB-C (PD) and 1 USB-A, 2 AUS Type I Outlets</div></div></div>	<div><div></div><div></div><div><div>5030-1300BBBQ</div><div>10 amp</div><div>1 USB-C (PD) and 1 USB-A, 1 AUS Type I Outlet</div></div></div>
	<div><div></div><div></div><div><div>5030-1133BBBQ</div><div>10 amp</div><div>2 USB-C (PD) and 2 USB-A, 2 AUS Type I Outlets</div></div></div>	<div><div></div><div></div><div><div>5030-1130BBBQ</div><div>10 amp</div><div>2 USB-C (PD) and 2 USB-A, 1 AUS Type I Outlet</div></div></div>	<div>Top - Black Glass</div> <div></div>



Planning Resources

- 17 Tear Sheets
Mounting Diagrams
- 18 Electrical Planning Guide
- 19 Electrical Certifications

Planning Resources Tear Sheets & Mounting Diagrams

Docking Drawer provides all of the necessary resources to plan a Flush Pop Up Series outlet installation.

[Simply click this link to download now.](#)

Tear Sheets

Download PDF Tear Sheets to easily share product summaries with your team.

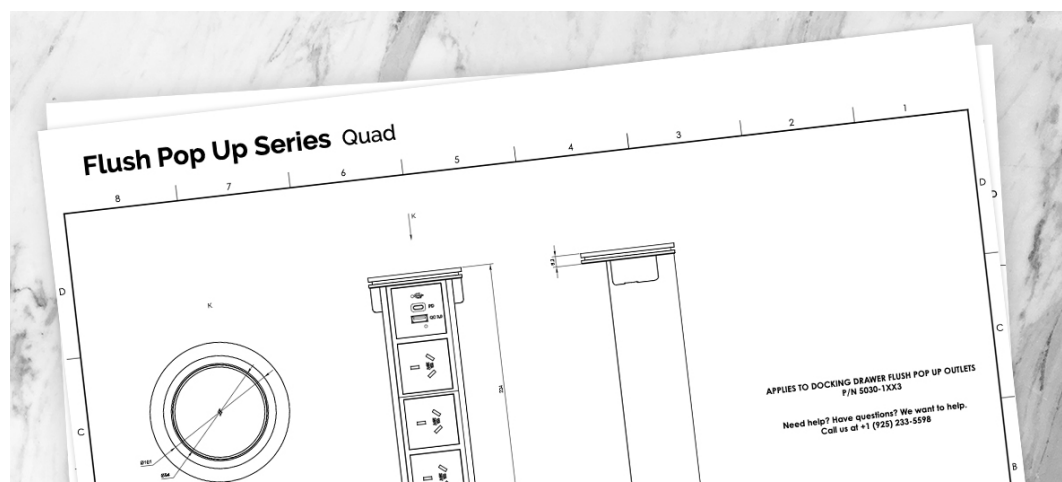


Pro Tip

Tear Sheets are available to download at dockingdrawer.com/downloads

Mounting Diagrams

Detailed engineering diagrams showing pop up outlet dimensions.



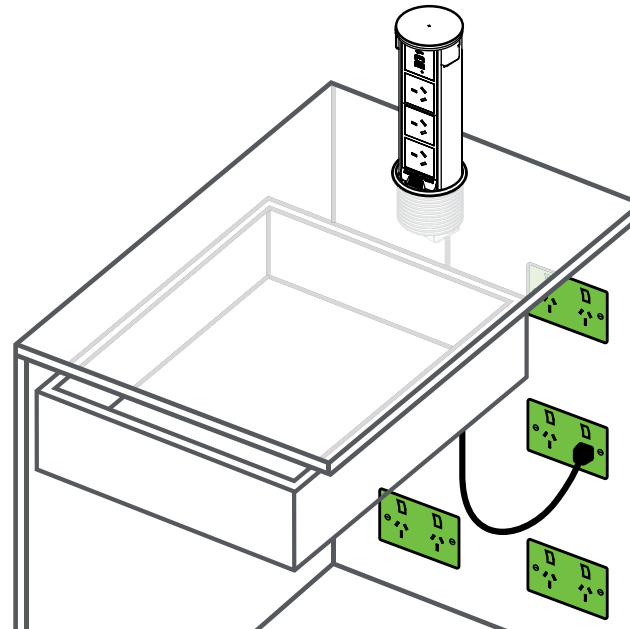
Pro Tip

Mounting Diagrams are available to download at dockingdrawer.com/downloads

Electrical Planning Locating In-Cabinet Power

Locating in-cabinet power is simple. The in-cabinet outlet needs to be within 1.5m of the Flush Pop Up installation cut out.

Recommended Locations for the In-Cabinet Electrical Supply



*Items marked in green are not included

Pro Tip

Ensure there is sufficient space in the base cabinet for the outlet to retract unobstructed.

Planning Resources Electrical Certifications

Docking Drawer provides all of the necessary resources to plan a Flush Pop Up Series outlet installation.

[Simply click this link to download now.](#)

Electrical Certifications

Download Australian Electrical Certifications to share with your electrician or inspector.



Pro Tip

Electrical Certifications are available for download at dockingdrawer.com/downloads

Installation Resources

21

Installation Manuals
Cutout Templates



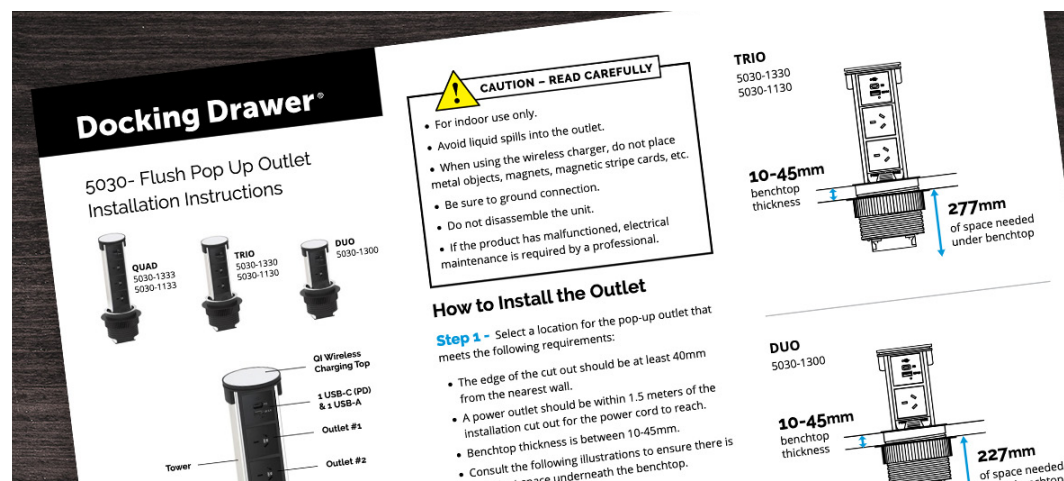
Installation Resources for Flush Pop Up Series Outlets

Docking Drawer provides all of the resources you need for a smooth Flush Pop Up Series outlet installation.

[Simply click this link to download now.](#)

Installation Manuals

Step by step instructions for installing Flush Pop Up Series outlets.

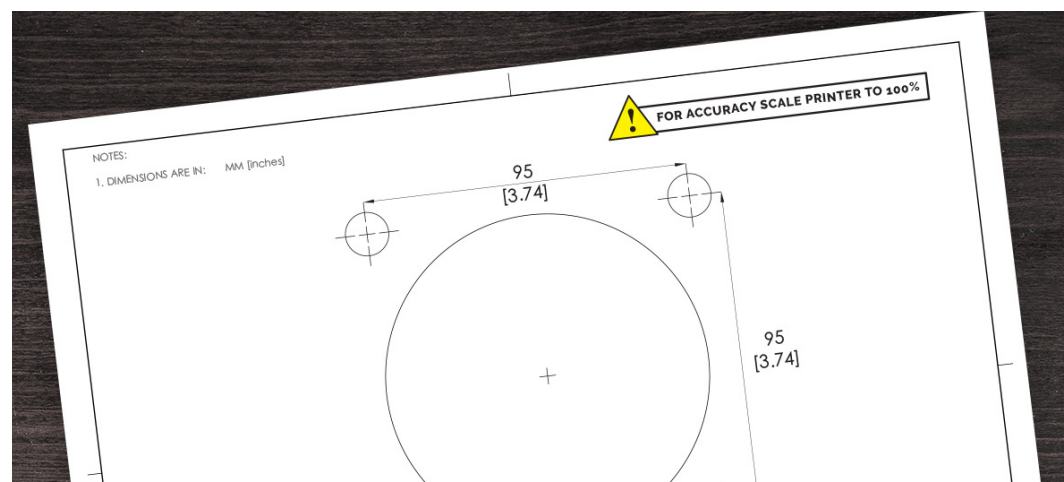


Pro Tip

Installation Manuals are available to download at dockingdrawer.com/downloads

Cutout Templates

Printable PDF templates to guide your installation cutout placement.



Pro Tip

Cutout Templates are available to download at dockingdrawer.com/downloads

Share Your Project & Get Paid

SHARE **YOUR** PROJECT &
earn up to
\$500



Submit your
photos



Add project
details



Get paid

FOR MORE DETAILS VISIT
[DOCKINGDRAWER.COM/PHOTOBUYING](https://dockingdrawer.com/photobuying)



Order Now

Order directly from Docking Drawer or
from your Hardware Distributor.

[See our Partners & Distributors](#)

We're Here to Help

sales@dockingdrawer.com

Email us here with your sales and
project planning questions.

support@dockingdrawer.com

Email us here with your technical
questions.

Docking Drawer®

