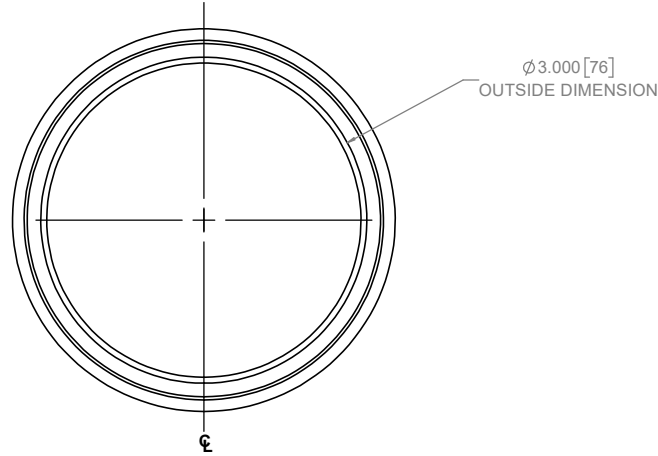
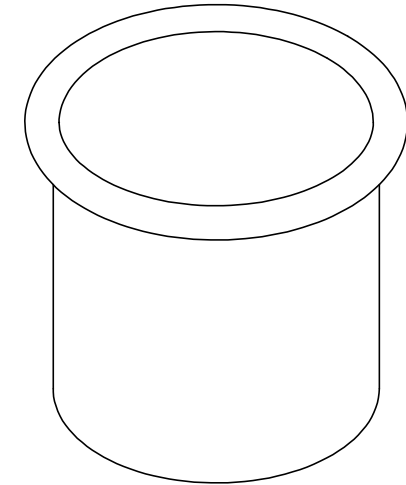
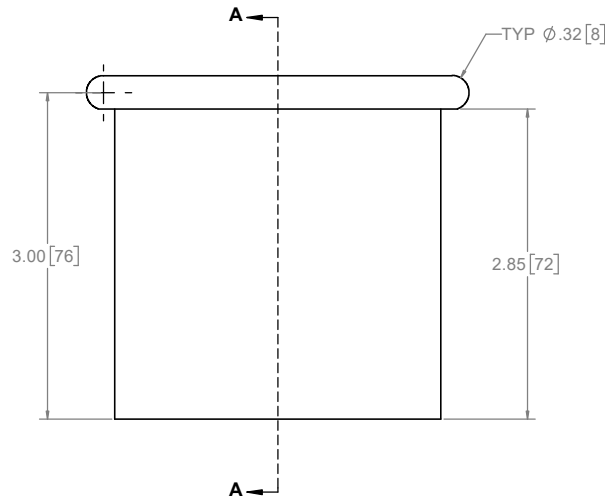
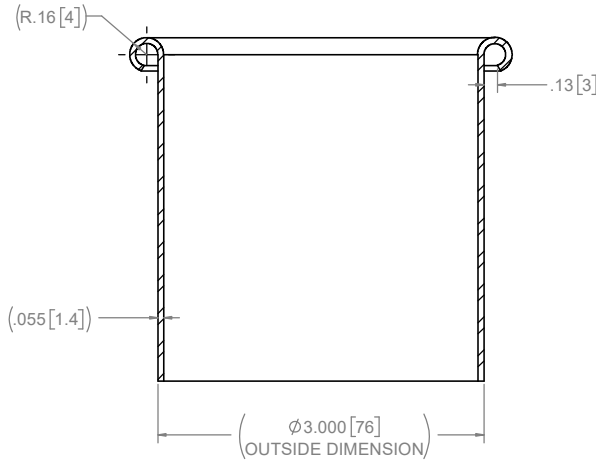


REVISIONS				
ECO #	REV	DESCRIPTION	BY	DATE
	001	INITIAL RELEASE	BN	11/17/2020
			APPROVED	PH



7. DIMENSIONS ARE IN INCHES[MILLIMETERS]
6. MATERIAL: 16 GAUGE STAINLESS STEEL SHEET, .055" THICK
5. FINISH: #TBD
4. INSTALL ALL OEM FASTENERS PER MFR'S INSTRUCTIONS
3. APPLICABLE STDs:  
 ASME Y14.5M-1994, GEOMETRIC DIMENSIONS AND TOLERANCING  
 ASME Y14.38-1999, ABBREVIATIONS AND ACRONYMS  
 ANSI/AWS A2.4-1998, STD SYMBOLS FOR WELDING, BRAZING  
 AND NON-DESTRUCTIVE EXAMINATION
2. DEBURR OR BREAK SHARP EDGES .005"
1. THIS DRAWING SHALL BE USED WITH THE 3D MODEL FOR COMPLETE PART DEFINITION. TOLERANCES ON ALL DIMENSIONED FEATURES TAKE PRECEDENCE OVER 3D PART MODEL. ALL UNDIMENSIONED FEATURES ARE DEFINED BY THE 3D PART MODEL AND MUST BE HELD TO  $\pm 0.010^\circ$ .

**NOTES, UNLESS OTHERWISE SPECIFIED:**

**STYLE DRAWER  
CANISTER - 3"**

SIZE	DWG NO.	REV
D	0170-40004	001
SCALE	1.75:1	SHEET 1 OF 1

**DOCKING DRAWER, INC. CONFIDENTIAL:** THIS DOCUMENT AND THE INFORMATION CONTAINED IN IT ARE CONFIDENTIAL AND CANNOT BE COPIED OR DISCLOSED IN WHOLE OR IN PART WITHOUT THE EXPRESS WRITTEN CONSENT OF DOCKING DRAWER, INC.